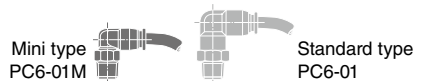




## Ultra Small Push-In Fitting Type for Pneumatic Piping Tube Fitting Mini Series

- *Ultra Small Push-In Fitting for General Pneumatic Piping.*
- *40% Miniaturized compared to Standard Type.*



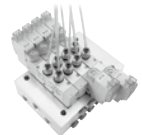
- *Easy Tube Release with Oval Release-Ring.*
- *ø1.8 Tube Size. The Industry's First Smallest Push-In Fitting. Suitable for Small Actuator Piping*



Miniature cylinder



Miniature Gripper



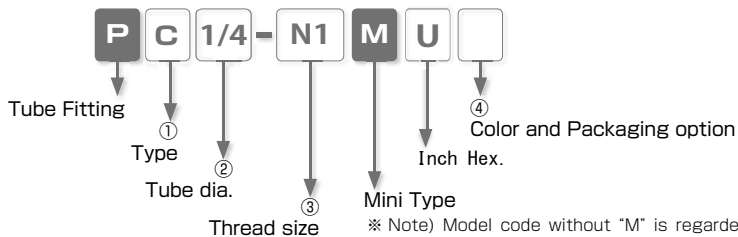
Miniature Solenoid Valve

- *Optional Selection of Body Color (light-gray) and Clean-Room Package.*

Fluorine-based grease is used on O-ring for clean-room package.

Products are packed in a clean room equivalent to ISO class 6.

## Model Designation (Example)



※ Note) Model code without "M" is regarded as Tube Fitting Standard Series.

### ① Type

Code	Type	Code	Type	Code	Type	Code	Type
<b>C</b>	Straight	<b>OC</b>	Inner Hex. Straight	<b>CC</b>	Cartridge	<b>L</b>	Elbow
<b>LL</b>	Long Elbow	<b>LH</b>	45° Elbow	<b>B</b>	Branch Tee	<b>D</b>	Run Tee
<b>OL</b>	Hex. Holed Banjo	<b>OLL</b>	Hex. Holed Long Banjo	<b>U</b>	Union Straight	<b>G</b>	Unequal Union Straight
<b>V</b>	Union Elbow	<b>E</b>	Union Tee	<b>EG</b>	Unequal Union Tee	<b>Y</b>	Union Y
<b>W</b>	Unequal Union Y	<b>M</b>	Bulkhead Union	<b>ZA</b>	Cross A	<b>ZB</b>	Cross B
<b>ZC</b>	Cross C	<b>GJ</b>	Unequal Plug-in Straight	<b>LJ</b>	Plug-in Elbow	<b>LGJ</b>	Unequal Plug-in Elbow
<b>LHJ</b>	45° Plug-in Elbow	<b>YJ</b>	Plug-in Y	<b>WJ</b>	Unequal Plug-in Y	<b>CF</b>	Female Straight
<b>F</b>	Extension Screw Adaptor	<b>IJ</b>	Union Stem	<b>PF</b>	Cap	<b>P</b>	Plug

### ② Tube dia. (※ In case that ② indicates thread size, select thread size from table ③)

Tube dia.	inch size				mm size			
Code	1/8	5/32	3/16	1/4	180	3	4	6
Size (mm)	ø3.2	ø3.97	ø4.76	ø6.35	ø1.8	ø3	ø4	ø6

### ③ Thread size (※ In case that ③ indicates tube dia., select tube dia. from table ②)

Thread size	Unified thread		Taper pipe thread		
Code	<b>U10U</b>		<b>NOU</b>	<b>N1U</b>	<b>N2U</b>
Size	10-32UNF		1/16NPT	1/8NPT	1/4NPT

※ The unit of wrench size is inch (the code suffix is "U").

Thread size	Metric thread (mm)			Taper pipe thread			Cartridge size (mm)	
Code	<b>M3</b>	<b>M5</b>	<b>M6</b>	<b>O1</b>	<b>O2</b>	<b>O3</b>	<b>M6</b>	<b>M8</b>
Size	M3 × 0.5	M5 × 0.8	M6 × 1	R1/8	R1/4	R3/8	M6 × 0.75	M8 × 0.75

※ R thread is same as BSPT

### ④ Color option , Packaging option

Code	Color option		Packaging option	
	No code	<b>W</b>	No code	<b>C</b>
Specification	Standard spec.	Light-gray spec.	Standard package	Clean-room package
Release-ring color	Black, White	Light-gray, White	④ : Selected color	Light-blue (※ 1), White
Resin body color	Black	Light-gray	④ : Selected color	Light-blue, Black

※ 1. When "W" is selected on ④ Color option, body color is light-gray.

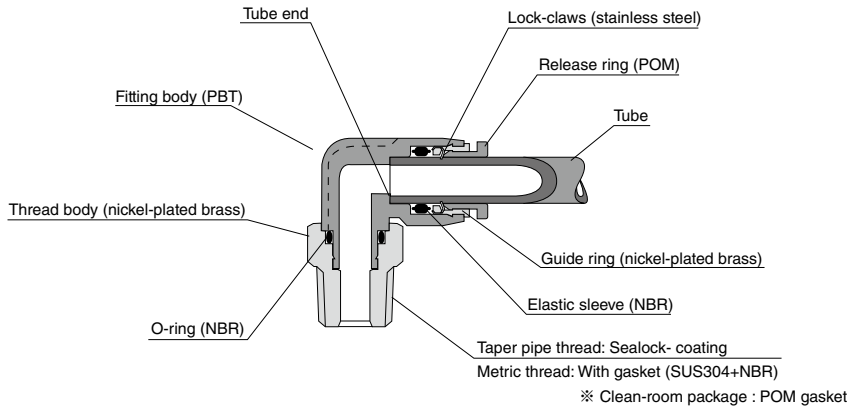
※ 2. Release-ring color is white for inch-size products.

※ 3. Imperial sizes – Clean room packaging comes with black resin body.

## Specifications

Fluid medium	Air
Max. operating pressure	150psi (1.0MPa)
Max. vacuum	-29.5in. Hg (-100kPa)
Operating temp. range	32 ~ 140°F (0 ~ 60°C) (no freezing)

## Construction (Elbow: PL)



- ※ M3 Thread: Thread body is nickel-plated free-cutting steel.
- ø1.8 fitting: Thread body is special stainless steel equivalent to SUS303.

## △ Detailed Safety Instructions

Before using PISCO products, be sure to read "Safety Instructions" and "Safety Instruction Manual" and "Common Safety Instructions for Fittings".

### Caution (Clean-room package)

1.As for Push-In Fitting, the functional part where tube is inserted may slightly slide due to an internal pressure change and this may generate dusts. Avoid using the fitting in the clean room of ISO class from 1 to 5. Under the vibrating condition, check the amount of dust generated from the fitting and tubes by using actual facilities.

# PC

## MINI TYPE

Straight



MODEL	D1	R1
PC1/8-U10MU	1/8"	10-32UNF
PC1/8-N0MU	1/8"	NPT1/16
PC1/8-N1MU	1/8"	NPT1/8
PC1/8-N2MU	1/8"	NPT1/4
PC5/32-M3M	5/32"	M3×0.5
PC5/32-M5M	5/32"	M5×0.8
PC5/32-M6M	5/32"	M6×1.0
PC5/32-01M	5/32"	R1/8
PC5/32-02M	5/32"	R1/4
PC5/32-U10MU	5/32"	10-32UNF
PC5/32-N0MU	5/32"	NPT1/16
PC5/32-N1MU	5/32"	NPT1/8
PC5/32-N2MU	5/32"	NPT1/8
PC1/4-M5M	1/4"	M5×0.8
PC1/4-M6M	1/4"	M6×1.0
PC1/4-M7M	1/4"	M7×1.0
PC1/4-01M	1/4"	NPT1/16
PC1/4-02M	1/4"	NPT1/8
PC1/4-03M	1/4"	NPT1/4
PC1/4-N0MU	1/4"	NPT1/16
PC1/4-N1MU	1/4"	NPT1/8
PC1/4-N2MU	1/4"	NPT1/4
PC1/4-N3MU	1/4"	NPT3/8
PC1/4-U10MU	1/4"	10-32UNF

MODEL	D1	R1
PC180-01M	1.8mm	R1/8
PC180-M3M	1.8mm	M3×0.5
PC180-M5M	1.8mm	M5×0.8
PC2-M3M	2mm	M3×0.5
PC2-M5M	2mm	M5×0.8
PC2-01M	2mm	R1/8
PC3-M3M	3mm	M3×0.5
PC3-M5M	3mm	M5×0.8
PC3-M6M	3mm	M6×1.0
PC3-01M	3mm	R1/8
PC4-M3M	4mm	M3×0.5
PC4-M5M	4mm	M5×0.8
PC4-M6M	4mm	M6×1.0
PC4-01M	4mm	R1/8
PC4-02M	4mm	R1/4
PC6-U10MU	6mm	10-32UNF
PC6-M5M	6mm	M5×0.8
PC6-M6M	6mm	M6×1.0
PC6-01M	6mm	R1/8
PC6-N1MU	6mm	NPT1/8
PC6-02M	6mm	R1/4
PC6-03M	6mm	R3/8
PC1/8-M3M	1/8"	M3×0.5
PC1/8-M5M	1/8"	M5×0.8
PC1/8-M6M	1/8"	M6×1.0
PC1/8-01M	1/8"	R1/8

# PCF

## MINI TYPE

Female Straight



MODEL	D1	R1
PCF1/8-U10MU	1/8"	10-32UNF
PCF5/32-M3M	5/32"	M3×0.5
PCF5/32-M5M	5/32"	M5×0.8
PCF5/32-U10MU	5/32"	10-32UNF
PCF1/4-M5M	1/4"	M5×0.8
PCF1/4-U10MU	1/4"	10-32UNF

MODEL	D1	R1
PCF180-M3M	1.8mm	M3×0.5
PCF2-M3M	2mm	M3×0.5
PCF3-M5M	3mm	M5×0.8
PCF3-M3M	3mm	M3×0.5
PCF4-U10MU	4mm	10-32UNF
PCF4-M3M	4mm	M3×0.5
PCF4-M5M	4mm	M5×0.8
PCF6-M5M	6mm	M5×0.8
PCF1/8-M3M	1/8"	M3×0.5
PCF1/8-M5M	1/8"	M5×0.8

# POC

## MINI TYPE

Inner Hex Straight



MODEL	D1	R1
POC1/8-U10MU	1/8"	10-32UNF
POC5/32-01M	5/32"	R1/8
POC5/32-M3M	5/32"	M3×0.5
POC5/32-M5M	5/32"	M5×0.8
POC5/32-M6M	5/32"	M6×1.0
POC5/32-N1MU	5/32"	NPT1/8
POC5/32-U10MU	5/32"	10-32UNF
POC1/4-01M	1/4"	R1/8
POC1/4-M5M	1/4"	M5×0.8
POC1/4-M6M	1/4"	M6×1.0
POC1/4-M7M	1/4"	M7×1.0
POC1/4-N0MU	1/4"	NPT1/16
POC1/4-N1MU	1/4"	NPT1/8
POC1/4-U10MU	1/4"	10-32UNF

MODEL	D1	R1
POC180-M3M	1.8mm	M3×0.5
POC2-M3M	2mm	M3×0.5
POC3-M3M	3mm	M3×0.5
POC3-M5M	3mm	M5×0.8
POC3-M6M	3mm	M6×1.0
POC4-M3M	4mm	M3×0.5
POC4-M5M	4mm	M5×0.8
POC4-M6M	4mm	M6×1.0
POC4-01M	4mm	R1/8
POC6-M5M	6mm	M5×0.8
POC6-M6M	6mm	M6×1.0
POC6-01M	6mm	R1/8
POC3/16-U10MU	3/16"	10-32UNF
POC3/16-M5M	3/16"	M5×0.8
POC3/16-N1MU	3/16"	NPT1/8
POC1/8-M3M	1/8"	M3×0.5
POC1/8-M5M	1/8"	M5×0.8
POC1/8-M6M	1/8"	M6×1.0
POC1/8-M7M	1/8"	M7×1.0

# PU

## MINI TYPE

Union Straight



MODEL	D1
PU180M	1.8mm
PU2M	2mm
PU3M	3mm
PU4M	4mm
PU6M	6mm
PU1/8M	1/8"
PU5/32M	5/32"
PU1/4M	1/4"

# PG

## MINI TYPE

Unequal Union Straight



MODEL	D1	D2
PG3-180M	3mm	1.8mm
PG3-2M	3mm	2mm
PG4-180M	4mm	1.8mm
PG4-3M	4mm	3mm
PG4-2M	4mm	2mm
PG6-3M	6mm	3mm
PG6-4M	6mm	4mm
PG4-1/8M	4mm	1/8"
PG6-1/8M	6mm	1/8"
PG5/32-1/8M	5/32"	1/8"
PG3/16-1/8M	3/16"	1/8"
PG1/4-1/8M	1/4"	1/8"
PG1/4-5/32M	1/4"	5/32"

**PL****MINI TYPE**

Elbow



MODEL	D1	R1
PL1/8-U10MU	1/8"	10-32UNF
PL1/8-N0MU	1/8"	NPT1/16
PL1/8-N1MU	1/8"	NPT1/8
PL1/8-N2MU	1/8"	NPT1/4
PL5/32-M3M	5/32"	M3×0.5
PL5/32-M5M	5/32"	M5×0.8
PL5/32-M6M	5/32"	M6×1.0
PL5/32-U10MU	5/32"	10-32UNF
PL5/32-N0MU	5/32"	NPT1/16
PL5/32-N1MU	5/32"	NPT1/8
PL5/32-N2MU	5/32"	NPT1/4
PL5/32-01M	5/32"	R1/8
PL5/32-02M	5/32"	R1/4
PL1/4-M5M	1/4"	M5×0.8
PL1/4-M6M	1/4"	M6×1.0
PL1/4-M7M	1/4"	M7×1.0
PL1/4-U10MU	1/4"	10-32UNF
PL1/4-N0MU	1/4"	NPT1/16
PL1/4-N1MU	1/4"	NPT1/8
PL1/4-N2MU	1/4"	NPT1/4
PL1/4-N3MU	1/4"	NPT3/8
PL1/4-01M	1/4"	R1/8
PL1/4-02M	1/4"	R1/4
PL1/4-03M	1/4"	R3/8

MODEL	D1	R1
PL180-01M	1.8mm	R1/8
PL180-M3M	1.8mm	M3×0.5
PL180-M5M	1.8mm	M5×0.8
PL2-M3M	2mm	M3×0.5
PL2-M5M	2mm	M5×0.8
PL2-01M	2mm	M6×1.0
PL3-M3M	3mm	M3×0.5
PL3-M5M	3mm	M5×0.8
PL3-M6M	3mm	M6×1.0
PL3-01M	3mm	R1/8
PL4-M3M	4mm	M3×0.5
PL4-M5M	4mm	M5×0.8
PL4-M6M	4mm	M6×1.0
PL4-01M	4mm	R1/8
PL4-02M	4mm	R1/4
PL6-M5M	6mm	M5×0.8
PL6-M6M	6mm	M6×1.0
PL6-01M	6mm	R1/8
PL6-02M	6mm	R1/4
PL6-03M	6mm	R3/8
PL8-01M	8mm	R1/8
PL8-02M	8mm	R1/4
PL8-03M	8mm	R3/8
PL10-02M	10mm	R1/4
PL10-03M	10mm	R3/8
PL1/8-M3M	1/8"	M3×0.5
PL1/8-M5M	1/8"	M5×0.8
PL1/8-M6M	1/8"	M6×1.0
PL1/8-01M	1/8"	R1/8

## PLL MINI TYPE

Long Elbow



MODEL	D1	R1
PLL1/8-U10MU	1/8"	10-32UNF
PLL1/8-N0MU	1/8"	NPT1/16
PLL1/8-N1MU	1/8"	NPT1/8
PLL1/8-01M	1/8"	R1/8
PLL5/32-M3M	5/32"	M3×0.5
PLL5/32-M5M	5/32"	M5×0.8
PLL5/32-M6M	5/32"	M6×1.0
PLL5/32-U10MU	5/32"	10-32UNF
PLL5/32-N0MU	5/32"	NPT1/16
PLL5/32-N1MU	5/32"	NPT1/8
PLL5/32-N2MU	5/32"	NPT1/4
PLL5/32-01M	5/32"	R1/8
PLL5/32-02M	5/32"	R1/4
PLL1/4-M5M	1/4"	M5×0.8
PLL1/4-M6M	1/4"	M6×1.0
PLL1/4-U10MU	1/4"	10-32UNF
PLL1/4-N0MU	1/4"	NPT1/16
PLL1/4-N1MU	1/4"	NPT1/8
PLL1/4-N2MU	1/4"	NPT1/4
PLL1/4-N3MU	1/4"	NPT3/8
PLL1/4-01M	1/4"	R1/8
PLL1/4-02M	1/4"	R1/4
PLL1/4-03M	1/4"	R3/8

MODEL	D1	R1
PLL180-M3M	1.8mm	M3×0.5
PLL180-M5M	1.8mm	M5×0.8
PLL2-M3M	2mm	M3×0.5
PLL2-M5M	2mm	M5×0.8
PLL3-M3M	3mm	M3×0.5
PLL3-M5M	3mm	M5×0.8
PLL3-M6M	3mm	M6×1.0
PLL3-01M	3mm	R1/8
PLL4-M3M	4mm	M3×0.5
PLL4-M5M	4mm	M5×0.8
PLL4-M6M	4mm	M6×1.0
PLL4-01M	4mm	R1/8
PLL4-02M	4mm	R1/4
PLL6-M5M	6mm	M5×0.8
PLL6-M6M	6mm	M6×1.0
PLL6-01M	6mm	R1/8
PLL6-02M	6mm	R1/4
PLL6-03M	6mm	R3/8
PLL1/8-M3M	1/8"	M3×0.5
PLL1/8-M5M	1/8"	M5×0.8
PLL1/8-M6M	1/8"	M6×1.0

## PLH MINI TYPE

45-degree Elbow



## PCC MINI TYPE

Cartridge



MODEL	D1	R1
PCC3-M6M	3mm	M6×0.75
PCC4-M6M	4mm	M6×0.75
PCC4-M8M	4mm	M8×0.75
PCC6-M8M	6mm	M8×0.75
PCC1/8-M6M	1/8"	M6×0.75

MODEL	D1	R1
PLH3-M3M	3mm	M3×0.5
PLH3-M5M	3mm	M5×0.8
PLH4-M3M	4mm	M3×0.5
PLH4-M5M	4mm	M5×0.8
PLH4-M6M	4mm	M6×1.0
PLH4-01M	4mm	R1/8
PLH6-M5M	6mm	M5×0.8
PLH6-M6M	6mm	M6×1.0
PLH6-01M	6mm	R1/8
PLH6-02M	6mm	R1/4

## POLL MINI TYPE



Hex. Holed Long Banjo

MODEL	D1	R1
POLL3-M5M	3mm	M5 x 0.8
POLL4-M5M	4mm	M5 x 0.8
POLL6-M5M	6mm	M5 x 0.8
POLL1/8-U10MU	1/8"	10-32UNF
POLL1/8-M5M	5/32"	M5 x 0.8
POLL5/32-U10MU	5/33"	10-32UNF
POLL5/32-M5M	5/34"	M5 x 0.8

## POL MINI TYPE



Hex. Holed Banjo

MODEL	D1	R1
POL3-M5M	3mm	M5 x 0.8
POL4-M5M	4mm	M5 x 0.8
POL6-M5M	6mm	M5 x 0.8
POL1/8-U10MU	1/8"	10-32UNF
POL1/8-M5M	1/8"	M5 x 0.8
POL5/32-U10MU	5/32"	10-32UNF
POL5/32-M5M	5/32"	M5 x 0.8

## PB MINI TYPE



Branch Tee

MODEL	D1	R1
PB1/8-U10MU	1/8"	10-32UNF
PB1/8-N1MU	1/8"	NPT1/8
PB5/32-M3M	5/32"	M3×0.5
PB5/32-M5M	5/32"	M5×0.8
PB5/32-M6M	5/32"	M6×1.0
PB5/32-U10MU	5/32"	10-32UNF
PB5/32-N1MU	5/32"	NPT1/8
PB5/32-N2MU	5/32"	NPT1/4
PB5/32-01M	5/32"	R1/8
PB5/32-02M	5/32"	R1/4
PB1/4-M5M	1/4"	M5×0.8
PB1/4-M6M	1/4"	M6×1.0
PB1/4-N0MU	1/4"	NPT1/16
PB1/4-N1MU	1/4"	NPT1/8
PB1/4-N2MU	1/4"	NPT1/4
PB1/4-N3MU	1/4"	NPT3/8
PB1/4-U10MU	1/4"	10-32UNF
PB1/4-01M	1/4"	R1/8
PB1/4-02M	1/4"	R1/4
PB1/4-03M	1/4"	R3/8

MODEL	D1	R1
PB180-M3M	1.8mm	M3×0.5
PB180-M5M	1.8mm	M5×0.8
PB2-M3M	2mm	M3×0.5
PB2-M5M	2mm	M5×0.8
PB3-M3M	3mm	M3×0.5
PB3-M5M	3mm	M5×0.8
PB3-M6M	3mm	M6×1.0
PB3-01M	3mm	R1/8
PB4-M3M	4mm	M3×0.5
PB4-M5M	4mm	M5×0.8
PB4-M6M	4mm	M6×1.0
PB4-01M	4mm	R1/8
PB4-02M	4mm	R1/4
PB6-M5M	6mm	M5×0.8
PB6-M6M	6mm	M6×1.0
PB6-01M	6mm	R1/8
PB6-02M	6mm	R1/4
PB6-03M	6mm	R3/8
PB1/8-M3M	1/8"	M3×0.5
PB1/8-M5M	1/8"	M5×0.8
PB1/8-M6M	1/8"	M6×1.0
PB1/8-01M	1/8"	R1/8



# PD

## MINI TYPE

Run Tee



MODEL	D1	R1
PD1/8-U10MU	1/8"	10-32UNF
PD1/8-N1MU	1/8"	NPT1/8
PD5/32-M3M	5/32"	M3×0.5
PD5/32-M5M	5/32"	M5×0.8
PD5/32-M6M	5/32"	M6×1.0
PD5/32-U10MU	5/32"	10-32UNF
PD5/32-N1MU	5/32"	NPT1/8
PD5/32-N2MU	5/32"	NPT1/4
PD5/32-01M	5/32"	R1/8
PD5/32-02M	5/32"	R1/4
PD1/4-M5M	1/4"	M5×0.8
PD1/4-M6M	1/4"	M6×1.0
PD1/4-N0MU	1/4"	NPT1/16
PD1/4-N1MU	1/4"	NPT1/8
PD1/4-N2MU	1/4"	NPT1/4
PD1/4-N3MU	1/4"	NPT3/8
PD1/4-U10MU	1/4"	10-32UNF
PD1/4-01M	1/4"	R1/8
PD1/4-02M	1/4"	R1/4
PD1/4-03M	1/4"	R3/8

MODEL	D1	R1
PD180-M3M	1.8mm	M3×0.5
PD180-M5M	1.8mm	M5×0.8
PD2-M3M	2mm	M3×0.5
PD2-M5M	2mm	M5×0.8
PD3-M3M	3mm	M3×0.5
PD3-M5M	3mm	M5×0.8
PD3-M6M	3mm	M6×1.0
PD3-01M	3mm	R1/8
PD4-M3M	4mm	M3×0.5
PD4-M5M	4mm	M5×0.8
PD4-M6M	4mm	M6×1.0
PD4-01M	4mm	R1/8
PD4-02M	4mm	R1/4
PD6-M5M	6mm	M5×0.8
PD6-M6M	6mm	M6×1.0
PD6-01M	6mm	R1/8
PD6-02M	6mm	R1/4
PD6-03M	6mm	R3/8
PD1/8-M3M	1/8"	M3×0.5
PD1/8-M5M	1/8"	M5×0.8
PD1/8-M6M	1/8"	M6×1.0
PD1/8-01M	1/8"	R1/8

# PGJ

## MINI TYPE

Reducer



MODEL	PD	D1
PGJ1/8-1/4M	1/8"	1/4"
PGJ1/8-5/32M	1/8"	5/32"
PGJ3/16-1/8M	3/16"	1/8"
PGJ3/16-1/4M	3/16"	1/4"
PGJ3/16-5/32M	3/16"	5/32"
PGJ1/4-6M	1/4"	6mm
PGJ1/4-1/8M	1/4"	1/8"
PGJ1/4-5/32M	1/4"	5/32"
PGJ5/32-1/8M	5/32"	1/8"
PGJ5/32-1/4M	5/32"	1/4"

MODEL	PD	D1
PGJ3-180M	3mm	1.8mm
PGJ3-2M	3mm	2mm
PGJ3-4M	3mm	4mm
PGJ3-6M	3mm	6mm
PGJ3-1/8M	3mm	1/8"
PGJ4-180M	4mm	1.8mm
PGJ4-2M	4mm	2mm
PGJ4-3M	4mm	3mm
PGJ4-6M	4mm	6mm
PGJ4-1/8M	4mm	1/8"
PGJ6-3M	6mm	3mm
PGJ6-4M	6mm	4mm
PGJ6-1/8M	6mm	1/8"
PGJ6-1/4M	6mm	1/4"

## PLJ MINI TYPE

Plug-in Elbow



MODEL	D1/PD
PLJ3M	3mm
PLJ4M	4mm
PLJ6M	6mm
PLJ1/8M	1/8"
PLJ5/32M	5/32"
PLJ3/16M	3/16"
PLJ1/4M	1/4"

## PLGJ MINI TYPE

Unequal Plug-in Elbow



MODEL	PD	D1
PLGJ1/8-1/4M	1/8"	1/4"
PLGJ1/4-6M	1/4"	6mm
PLGJ1/4-1/8M	1/4"	1/8"
PLGJ1/4-5/32M	1/4"	5/32"
PLGJ3/16-1/8M	3/16"	1/8"
PLGJ3/16-5/32M	3/16"	5/32"
PLGJ3/16-1/4M	3/16"	1/4"
PLGJ5/32-1/8M	5/32"	1/8"
PLGJ5/32-1/4M	5/32"	1/4"

## PE MINI TYPE

Union Tee



MODEL	D1
PE180M	1.8mm
PE2M	2mm
PE3M	3mm
PE4M	4mm
PE6M	6mm
PE1/8M	1/8"
PE5/32M	5/32"
PE1/4M	1/4"

## PLHJ MINI TYPE

45-degree Plug-in Elbow



MODEL	D1/PD
PLHJ4M	4mm
PLHJ6M	6mm

MODEL	PD	D1
PLGJ3-180M	3mm	1.8mm
PLGJ3-2M	3mm	2mm
PLGJ3-4M	3mm	4mm
PLGJ3-6M	3mm	6mm
PLGJ3-1/8M	3mm	1/8"
PLGJ4-180M	4mm	1.8mm
PLGJ4-2M	4mm	2mm
PLGJ4-3M	4mm	3mm
PLGJ4-6M	4mm	6mm
PLGJ4-1/8M	4mm	1/8"
PLGJ6-3M	6mm	3mm
PLGJ6-4M	6mm	4mm
PLGJ6-1/8M	6mm	1/8"
PLGJ6-1/4M	6mm	1/4"
PLGJ1/8-3M	1/8"	3mm
PLGJ1/8-5/32M	1/8"	5/32"

## PEG MINI TYPE

Unequal Union Tee



MODEL	D1	D2
PEG3-180M	3mm	1.8mm
PEG3-2M	3mm	2mm
PEG3-4M	3mm	4mm
PEG4-3M	4mm	3mm
PEG4-6M	4mm	6mm
PEG6-4M	6mm	4mm
PEG4-1/8M	4mm	1/8"
PEG1/8-5/32M	1/8"	5/32"
PEG5/32-1/8M	5/32"	1/8"
PEG5/32-1/4M	5/32"	1/4"
PEG1/4-5/32M	1/4"	5/32"

**PY**  
MINI TYPE

Union Y



MODEL	D1
PY180M	1.8mm
PY2M	2mm
PY3M	3mm
PY4M	4mm
PY6M	6mm
PY1/8M	1/8"
PY5/32M	5/32"
PY1/4M	1/4"

**PW**  
MINI TYPE

Unequal Union Y



MODEL	D1	D2
PW4-3M	4mm	3mm
PW6-3M	6mm	3mm
PW6-4M	6mm	4mm
PW1/8-3M	1/8"	3mm
PW4-1/8M	4mm	1/8"
PW6-1/8M	6mm	1/8"
PW5/32-1/8M	5/32"	1/8"
PW1/4-5/32M	1/4"	5/32"
PW1/4-1/8M	1/4"	1/8"

**PYJ**  
MINI TYPE

Plug-in Y



MODEL	PD/D1
PYJ3M	3mm
PYJ4M	4mm
PYJ6M	6mm
PYJ5/32M	5/32"
PYJ1/8M	1/8"

**PWJ**  
MINI TYPE

Unequal Plug-in Y



MODEL	PD	D1
PWJ4-3M	4mm	3mm
PWJ6-3M	6mm	3mm
PWJ6-4M	6mm	4mm
PWJ4-1/8M	4mm	1/8"
PWJ6-1/8M	6mm	1/8"
PWJ5/32-1/8M	5/32"	1/8"

**PM**  
MINI TYPE

Bulkhead Union



MODEL	D1
PM180M	1.8mm
PM2M	2mm
PM3M	3mm
PM4M	4mm
PM6M	6mm
PM1/8M	1/8"
PM1/8MU	1/8"
PM5/32M	5/32"
PM5/32MU	5/32"
PM1/4M	1/4"
PM1/4MU	1/4"

**PV**  
MINI TYPE

Union Elbow



MODEL	D1
PV180M	1.8mm
PV2M	2mm
PV3M	3mm
PV4M	4mm
PV6M	6mm
PV1/8M	1/8"
PV5/32M	5/32"
PV1/4M	1/4"

## PZA

### MINI TYPE

Union Cross



MODEL	D1
PZA3M	3mm
PZA4M	4mm
PZA6M	6mm
PZA1/8M	1/8"
PZA5/32M	5/32"

## PZB

### MINI TYPE

Unequal Cross



MODEL	D1	D2
PZB4-3M	4mm	3mm
PZB6-4M	6mm	4mm
PZB1/8-3M	1/8"	3mm
PZB4-1/8M	4mm	1/8"
PZB6-1/8M	6mm	1/8"
PZB5/32-1/8M	5/32"	1/8"

## PZC

### MINI TYPE

Reducing Cross



MODEL	D1	D2
PZC4-3M	4mm	3mm
PZC6-4M	6mm	4mm
PZC1/8-3M	1/8"	3mm
PZC4-1/8M	4mm	1/8"
PZC6-1/8M	6mm	1/8"
PZC5/32-1/8M	5/32"	1/8"

## PIJ

### MINI TYPE

Union Stem



MODEL	PD
PIJ3M	4mm
PIJ1/8M	6mm

## PPF

### MINI TYPE

Cap



MODEL	D1
PPF180M	1.8mm
PPF2M	2mm
PPF3M	3mm

## PP

### MINI TYPE

Plug



MODEL	PD
PP180M	1.8mm
PP2M	2mm
PP3M	3mm
PP1/8M	1/8"

## PF

### MINI TYPE

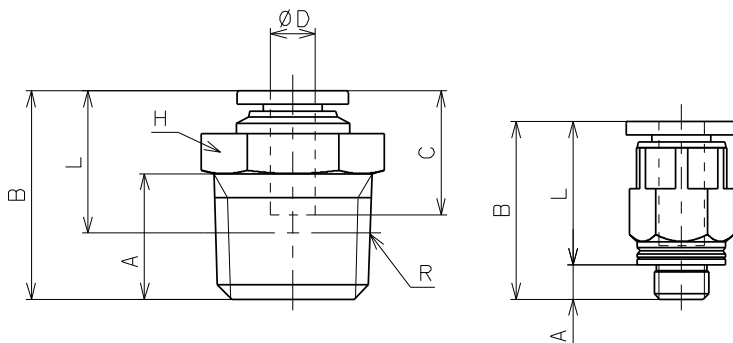
Extension Screw Adaptor



MODEL	R1	R2
PFM5-M3M	M5X0.8	M3X0.5
PF01-M3M	R1/8	M3X0.5

**PC Mini** Straight

RoHS compliant



↑ unified thread

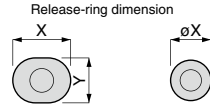
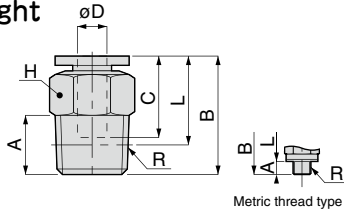
❖ NPT and UNF

unit: inch

Model	Tube O.D. φ D	R	A	B	L	C	Hex.	Orifice φ (mm)	Wt. (g)	CAD file name
PC3-U10MU	3	10-32UNF	0.12	0.61	0.50	0.43	5/16	2.0	3.2	PC3-U10MU
PC3-N1MU	3	1/8-27NPT	0.31	0.61	0.45	0.43	7/16	2.0	7.6	PC3-N1MU
PC4-U10MU	4	10-32UNF	0.12	0.61	0.50	0.43	5/16	2.4	3.1	PC4-U10MU
PC4-N1MU	4	1/8-27NPT	0.31	0.61	0.45	0.43	7/16	2.5	7.4	PC4-N1MU
PC6-U10MU	6	10-32UNF	0.12	0.64	0.52	0.46	7/16	2.4	7.5	PC6-U10MU
PC6-N1MU	6	1/8-27NPT	0.31	0.69	0.53	0.46	7/16	4.6	7.5	PC6-N1MU
PC1/8-U10MU	1/8	10-32UNF	0.12	0.61	0.50	0.43	5/16	2.0	3.2	PC1_8-U10MU
PC1/8-N0MU	1/8	1/16-27NPT	0.31	0.70	0.54	0.43	7/16	2.0	7.3	PC1_8-N0MU
PC1/8-N1MU	1/8	1/8-27NPT	0.31	0.61	0.45	0.43	7/16	2.0	7.6	PC1_8-N1MU
PC1/8-N2MU	1/8	1/4-18NPT	0.43	0.72	0.49	0.43	9/16	2.0	16	PC1_8-N2MU
PC5/32-U10MU	5/32	10-32UNF	0.12	0.61	0.50	0.43	5/16	2.4	3.1	PC5_32-U10MU
PC5/32-N0MU	5/32	1/16-27NPT	0.31	0.70	0.54	0.43	7/16	2.5	7.3	PC5_32-N0MU
PC5/32-N1MU	5/32	1/8-27NPT	0.31	0.61	0.45	0.43	7/16	2.5	7.4	PC5_32-N1MU
PC5/32-N2MU	5/32	1/4-18NPT	0.43	0.72	0.49	0.43	9/16	2.5	16	PC5_32-N2MU
PC1/4-U10MU	1/4	10-32UNF	0.12	0.63	0.52	0.45	7/16	2.4	5.2	PC1_4-U10MU
PC1/4-N0MU	1/4	1/16-27NPT	0.31	0.78	0.62	0.45	7/16	3.5	7.1	PC1_4-N0MU
PC1/4-N1MU	1/4	1/8-27NPT	0.31	0.74	0.58	0.45	7/16	4.6	7.7	PC1_4-N1MU
PC1/4-N2MU	1/4	1/4-18NPT	0.43	0.74	0.51	0.45	9/16	4.6	14	PC1_4-N2MU
PC1/4-N3MU	1/4	3/8-18NPT	0.47	0.78	0.54	0.45	11/16	4.6	27	PC1_4-N3MU

**PC Mini** Straight

R6HS compliant



øD: 3, 4, 6, 1/8, 5/32, 1/4    øD: 1.8, 2

Unit : mm

Model code	Tube O.D. øD	R	A	B	L	Tube end C	Hex. H	X (øX)	Y	Effective area (mm <sup>2</sup> )	Weight (g)	CAD file name							
PC180-M3M④	1.8	M3 × 0.5	2.5 [2.2]	12.1	9.6 [9.9]	8.4	5	4.8	-	0.7	1	PC180-M3M							
PC180-M5M④		M5 × 0.8	3 [3.2]	11.8	8.8 [8.6]		7					PC180-M5M							
PC3-M3M④	3	M3 × 0.5	2.5 [2.2]	13.1	10.6 [10.9]	9.4	5.5	7	6	0.7	1.1	PC3-M3M							
PC3-M5M④		M5 × 0.8	3 [3.2]	15.6	12.6 [12.4]		10.9					8	9.8	7.8	3	3.4	PC3-M5M		
PC3-M6M④		M6 × 1	3.9	16.6	12.7							3.7				PC3-M6M			
PC3-01M④		R1/8	8	15.6	11.6							2.9				6.7	PC3-01M		
PC4-M3M④		M3 × 0.5	2.5 [2.2]	15.1	12.6 [12.9]							10.9				8	9.8	7.8	0.9
PC4-M5M④	M5 × 0.8	3 [3.2]	15.6	12.6 [12.4]	3.8	3.2	PC4-M5M												
PC4-M6M④	M6 × 1	3.9	16.6	12.7	6.3	3.6	PC4-M6M												
PC4-01M④	R1/8	8	15.6	11.6	6.4	6.6	PC4-01M												
PC4-02M④	R1/4	11	17.3	11.3	6.1	14	PC4-02M												
PC6-M5M④	6	M5 × 0.8	3 [3.2]	17	14 [13.8]	11.7	10	11.8	9.8	3.6	4.5	PC6-M5M							
PC6-M6M④		M6 × 1	3.9	18	14.1							6.3	6	PC6-M6M					
PC6-01M④		R1/8	8	17.6	13.6									10.6	13	PC6-01M			
PC6-02M④		R1/4	11	11.6	26											PC6-02M			
PC6-03M④		R3/8	12	19.6	13.3									26	PC6-03M				
PC1/8-M3M④	1/8	M3 × 0.5	2.5 [2.2]	15.1	12.6 [12.9]	10.9	8	9.8	7.8	0.9	2.5	PC1_8-M3M							
PC1/8-M5M④		M5 × 0.8	3 [3.2]	15.6	12.6 [12.4]							2.6	3.5	PC1_8-M5M					
PC1/8-M6M④		M6 × 1	3.9	16.6	12.7							2.9	3.6	PC1_8-M6M					
PC1/8-01M④		R1/8	8	15.6	11.6							2.7	6.6	PC1_8-01M					
PC5/32-M3M④	5/32	M3 × 0.5	2.5 [2.2]	15.1	12.6 [12.9]	10.9	8	9.8	7.8	0.9	2.4	PC5_32-M3M							
PC5/32-M5M④		M5 × 0.8	3 [3.2]	15.6	12.6 [12.4]							3.8	3.2	PC5_32-M5M					
PC5/32-M6M④		M6 × 1	3.9	16.6	12.7							3.9	3.6	PC5_32-M6M					
PC5/32-01M④		R1/8	8	15.6	11.6							4.3	6.6	PC5_32-01M					
PC5/32-02M④		R1/4	11	17.3	11.3							6.1	15	PC5_32-02M					
PC1/4-M5M④	1/4	M5 × 0.8	3 [3.2]	16.8	13.8 [13.6]	11.4	10	11.8	9.8	3.6	4.2	PC1_4-M5M							
PC1/4-M6M④		M6 × 1	3.9 [4]	17.8	13.9 [13.8]							5.7	4.6	PC1_4-M6M					
PC1/4-M7M④		M7 × 1	<b>Ask us for the dimensions</b>																
PC1/4-01M④		R1/8	8	18.4	14.4							11.4	10	11.8	9.8	14.1	6	13	PC1_4-01M
PC1/4-02M④		R1/4	11	17.8	11.9								14						PC1_4-02M
PC1/4-03M④	R3/8	12	19.9	13.6	17	26	PC1_4-03M												
PC2-M3M④	M3 × 0.5	2.5 [2.2]	12.1	9.6 [9.9]	8.4	5	4.8	-	0.7	0.9	2.2		PC2-M3M						
PC2-M5M④	M5 × 0.8	3 [3.2]	11.8	8.8 [8.6]		7						PC2-M5M							
PC2-01M④	R1/8	8	15.4	11.4		10						7.4	PC2-01M						
PC180-01M④	1.8	R1/8	8	15.4	11.4	8.4	10	4.8	-	1	7.4	PC180-01M							

\* 1. ④ in Model code / Replaced with "W" for Light-gray color and/or "C" for Clean-room package

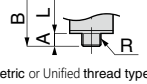
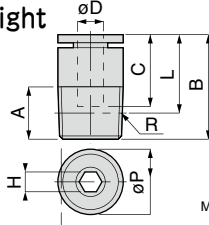
\* 2. "L" is a reference value for height dimension after tightening taper thread.

\* 3. Dimensions in [ ] are for clean-room package products

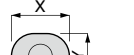


Inner Hex. Straight

RoHS compliant



Release-ring dimension



øD: 3, 4, 6, 1/8, 5/32, 1/4

øD: 1.8, 2

## ❖ NPT and UNF

unit: inch

Model	Tube O.D. φD	R	A	B	L	C	Hex.	φP	Orifice φ(mm)	Wt. (g)	CAD file name
POC1/8-U10MU	1/8	10-32UNF	0.12	0.61	0.50	0.43	5/64	0.31	2.0	3.4	POC1_8-U10MU
POC5/32-U10MU	5/32	10-32UNF	0.12	0.61	0.50	0.43	3/32	0.31	2.5	3	POC5_32-U10MU
POC5/32-N1MU	5/32	1/8-27NPT	0.31	0.62	0.46	0.43	3/32	0.39	2.5	6.6	POC5_32-N1MU
POC1/4-U10MU	1/4	10-32UNF	0.12	0.63	0.52	0.45	3/32	0.39	2.5	3.2	POC1_4-U10MU
POC1/4-N0MU	1/4	1/16-27NPT	0.31	0.77	0.61	0.45	5/32	0.39	4.2	4.2	POC1_4-N0MU
POC1/4-N1MU	1/4	1/8-27NPT	0.31	0.72	0.56	0.45	5/32	0.39	4.2	5.9	POC1_4-N1MU
POC3/16-U10MU	3/16	10-32UNF	Ask us for the dimensions								
POC3/16-N1MU	3/16	1/8-27NPT									

Unit : mm

Model code	Tube O.D. øD	R	A	B	L	Tube end C	Hex. H	øP	X (øX)	Y	Effective area (mm <sup>2</sup> )	Weight (g)	CAD file name
POC180-M3M④	1.8	M3 × 0.5	2.5 [2.2]	12.1	9.6 [9.9]	8.4	1.3	5	4.8	—	0.7	0.9	POC180-M3M
POC3-M3M④	3	M3 × 0.5	2.5 [2.2]	15.1	12.6 [12.9]	10.9	1.5	8	9.8	7.8	1.9	2.3	POC3-M3M
POC3-M5M④		M5 × 0.8	3 [3.2]	15.6	12.6 [12.4]		2				2.8	3.2	POC3-M5M
POC3-M6M④		M6 × 1	3.9	18.2	14.3	12.5	3				3.5	POC3-M6M	
POC4-M3M④	4	M3 × 0.5	2.5 [2.2]	15.1	12.6 [12.9]	10.9	1.5	8	9.8	7.8	1.8	2.2	POC4-M3M
POC4-M5M④		M5 × 0.8	3 [3.2]	15.6	12.6 [12.4]		2.5				5.1	3	POC4-M5M
POC4-M6M④		M6 × 1	3.9	16.6	12.7		3				7	3.3	POC4-M6M
POC4-01M④		R1/8	8	15.8	11.8	3	10				7.4	6.2	POC4-01M
POC6-M5M④	6	M5 × 0.8	3 [3.2]	17.5	14.5 [14.3]	11.7	2.5	9.8	11.8	9.8	5.2	4.4	POC6-M5M
POC6-M6M④		M6 × 1	3.9	18	14.1		3				7.1	4.7	POC6-M6M
POC6-01M④		R1/8	8	17.9	13.9		4				13	5.6	POC6-01M
POC1/8-M3M④	1/8	M3 × 0.5	2.5 [2.2]	15.1	12.6 [12.9]	10.9	1.5	8	9.8	7.8	1.8	2.3	POC1_8-M3M
POC1/8-M5M④		M5 × 0.8	3 [3.2]	15.6	12.6 [12.4]		2				3.3	3	POC1_8-M5M
POC1/8-M6M④		M6 × 1	3.9	16.6	12.7		3				3.1	3.6	POC1_8-M6M
POC5/32-M3M④	5/32	M3 × 0.5	2.5 [2.2]	15.1	12.6 [12.9]	10.9	1.5	8	9.8	7.8	1.8	2.2	POC5_32-M3M
POC5/32-M5M④		M5 × 0.8	3 [3.2]	15.6	12.6 [12.4]		2.5				5.1	3	POC5_32-M5M
POC5/32-M6M④		M6 × 1	3.9	16.6			3				7	3.3	POC5_32-M6M
POC5/32-01M④		R1/8	8	15.8	11.8		3				7.4	6.2	POC5_32-01M
POC1/4-M5M④	1/4	M5 × 0.8	3 [3.2]	17.1	14.1 [13.9]	11.4	2.5	9.8	11.8	9.8	4.8	3.8	POC1_4-M5M
POC1/4-M6M④		M6 × 1	4		3		7.3				4.1	POC1_4-M6M	
POC1/4-01M④		R1/8	8	17.7	13.7		4				10	5.2	12
POC1/4-M7M④		M7 × 1	Ask us for the dimensions										
POC1/8-M7M④	1/8	M7 × 1	Ask us for the dimensions										
POC3/16-M5M④	3/16	M5 × 0.8	Ask us for the dimensions										
POC2-M3M④	2	M3 × 0.5	2.5 [2.2]	12.1	9.6 [9.9]	8.4	1.3	5	4.8	—	0.7	0.9	POC2-M3M

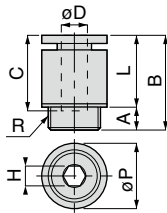
※ 1. ④ in Model code / Replaced with "W" for Light-gray color and/or "C" for Clean-room package

※ 2. "L" is a reference value for height dimension after tightening taper thread.

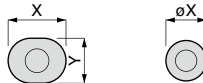
※ 3. Dimensions in [ ] are for clean-room package products

## PCC Mini Cartridge

RoHS compliant



Release-ring dimension



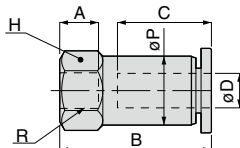
$\phi D$ : 3, 4, 6, 1/8, 5/32, 1/4     $\phi D$ : 1.8, 2    Unit : mm

Model code	Tube O.D. $\phi D$	R	A	B	L	Tube end C	Hex. H	$\phi P$	X	Y	Effective area (mm <sup>2</sup> )	Weight (g)	CAD file name
PCC3-M6M④	3	M6 × 0.75	3	14	11	10.9	2	8	9.8	7.8	2.9	2.7	PCC3-M6M
PCC4-M6M④	4	M6 × 0.75	3.4	14	11	10.9	2.5	8	9.8	7.8	5.1	2.6	PCC4-M6M
PCC4-M8M④		M8 × 0.75			10.6		3				10	7.3	4.9
PCC6-M8M④	6	M8 × 0.75	3.4	14.8	11.4	11.7	4	10	11.8	9.8	12.8	3.6	PCC6-M8M
PCC1/8-M6M④	1/8	M6 × 0.75	3	14	11	10.9	2	8	9.8	7.8	3	2.7	PCC1_8-M6M

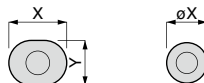
※ 1. ④ in Model code / Replaced with "W" for Light-gray color and/or "C" for Clean-room package

## PCF Mini Female Straight

RoHS compliant



Release-ring dimension



$\phi D$ : 3, 4, 6, 1/8, 5/32, 1/4     $\phi D$ : 1.8, 2

❖ UNF thread

unit: inch

Model	Tube O.D. $\phi D$	M	A	B	$\phi P$	C	Hex.	Orifice $\phi$ (mm)	Weight (g)	CAD file name
PCF1/8-U10MU	1/8	10-32UNF	0.18	0.67	0.31	0.43	5/16	2.0	4.3	PCF1_8-U10MU
PCF5/32-U10MU	5/32	10-32UNF	0.18	0.67	0.31	0.43	5/16	2.0	4.2	PCF5_32-U10MU
PCF1/4-U10MU	1/4	10-32UNF	0.14	0.65	0.39	0.45	7/16	3.9	6.7	PCF1_4-U10MU
PCF4-U10MU	4	10-32UNF	0.18	0.67	0.31	0.43	5/16	2.0	4.2	

Unit : mm

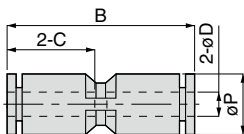
Model code	Tube O.D. $\phi D$	R	A	B	$\phi P$	Tube end C	Hex. H	X	Y	Effective area (mm <sup>2</sup> )	Weight (g)	CAD file name
PCF3-M3M④	3	M3 × 0.5 (4.35)	13.75	5.5	8	9.4	5.5	7	6	1.4	1.5	PCF3-M3M
PCF3-M5M④		M5 × 0.8 (4.5)	15.4	8						2.8	4.2	PCF3-M5M
PCF4-M3M④	4	M3 × 0.5 (4.5)	15.4	8	10.9	8	9.8	7.8	7.8	3.5	3.6	PCF4-M3M
PCF4-M5M④		M5 × 0.8 (4.5)	17.6							2.6	4.3	PCF4-M5M
PCF1/8-M3M④	1/8	M3 × 0.5 (4.5)	15.4	8	10.9	8	9.8	7.8	7.8	3.5	3.7	PCF1_8-M3M
PCF1/8-M5M④		M5 × 0.8 (4.5)	17.6							2.6	4.4	PCF1_8-M5M
PCF5/32-M3M④	5/32	M3 × 0.5 (4.5)	15.4	8	10.9	8	9.8	7.8	7.8	3.5	3.6	PCF5_32-M3M
PCF5/32-M5M④		M5 × 0.8 (4.5)	17.6							2.6	4.3	PCF5_32-M5M
PCF1/4-M5M④	1/4	M5 × 0.8 (4.5)	5.1	16.5	10	11.4	10	11.8	9.8	11.1	5.8	PCF5_32-M5M
PCF6-M5M④	6	M5 × 0.8 (4.5)	5	16.7	10	11.7	10	11.8	9.8	9.1	6.1	PCF6-M5M
PCF180-M3M④	1.8	M3 × 0.5 (4.5)	4	13.9	5	8.4	5	4.8	—	0.9	1.4	PCF180-M3M
PCF2-M3M④	2	M3 × 0.5 (4.5)	4	13.9	5	8.4	5	4.8	—	0.9	1.4	PCF2-M3M

※ 1. ④ in Model code / Replaced with "W" for Light-gray color and/or "C" for Clean-room package

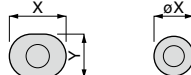


**PU Mini** Union Straight

RoHS compliant



Release-ring dimension



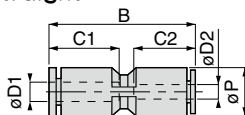
øD: 3, 4, 6, 1/8, 5/32, 1/4    øD: 1.8, 2    Unit : mm

Model code	Tube O.D. øD	B	øP	Tube end C	X (øX)	Y	Effective area (mm <sup>2</sup> )	Weight (g)	CAD file name
PU180M <sup>④</sup>	1.8	18.5	6	8.4	4.8	—	0.6	1.1	PU180M
PU2M <sup>④</sup>	2	18.5	6	8.4	4.8	—	0.6	1.1	PU2M
PU3M <sup>④</sup>	3	19.6	6	9.3	7	6	2.7	1.1	PU3M
PU4M <sup>④</sup>	4	22.7	8	11	9.8	7.8	5.4	2	PU4M
PU6M <sup>④</sup>	6	24.4	10.4	11.6	11.8	9.8	11	3.1	PU6M
PU1.8M <sup>④</sup>	1/8	22.7	8	11	9.8	7.8	2.6	2.1	PU1_8M
PU5/32M <sup>④</sup>	5/32	22.7	8	11	9.8	7.8	5.4	3.1	PU5_32M
PU1/4M <sup>④</sup>	1/4	24.8	10.4	11.4	11.8	9.8	11.5	3.1	PU1_4M

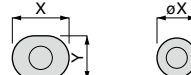
※ 1. ④ in Model code / Replaced with "W" for Light-gray color and/or "C" for Clean-room package

**PG Mini** Unequal Union Straight

RoHS compliant



Release-ring dimension



øD: 3, 4, 6, 1/8, 5/32, 1/4    øD: 1.8, 2    Unit : mm

Model code	Tube O.D. øD1	Tube O.D. øD2	B	øP	Tube end C1	Tube end C2	øD1 release-ring		øD2 release-ring		Effective area (mm <sup>2</sup> )	Weight (g)	CAD file name				
							X	Y	X(øX)	Y							
PG3-180M <sup>④</sup>	3	1.8	19.1	6	9.3	8.4	7	6	4.8	—	0.6	1.1	PG3-180M				
PG4-180M <sup>④</sup>		1.8	22.4	8	11	8.4	9.8	7.8	4.8	—	0.6	1.8	PG4-180M				
PG4-3M <sup>④</sup>	4	3	22.7						11	11	9.8	7.8	9.8	7.8	2.4	2.1	PG4-3M
PG4-1/8M <sup>④</sup>		1/8															PG4-1_8M
PG6-3M <sup>④</sup>	6	3	24	10.4	11.6	11	11.8	9.8	9.8	7.8	5.6	3	PG6-3M				
PG6-4M <sup>④</sup>		4									2.6		PG6-4M				
PG6-1/8M <sup>④</sup>		1/8									2.6		PG6-1_8M				
PG1/4-1/8M <sup>④</sup>	1/4	1/8	24.2	10.4	11.4	11	11.8	9.8	9.8	7.8	4.7	3	PG1_4-1_8M				
PG1/4-5/32M <sup>④</sup>		5/32									3.8		3.9	PG1_4-5_32M			
PG5/32-1/8M <sup>④</sup>	5/32	1/8	22.7	8	11	11	9.8	7.8	9.8	7.8	2.4	2.1	PG5_32-1_8M				
PG1/4-6M <sup>④</sup>	1/4	6	Ask us for the dimensions														
PG3/16-1/8M <sup>④</sup>	3/16	1/8	Ask us for the dimensions														
PG3-2M <sup>④</sup>	3	2	19.1	6	9.3	8.4	7	6	4.8	—	0.9	1	PG3-2M				
PG4-2M <sup>④</sup>	4	2	22.4	8	11	8.4	9.8	7.8	4.8	—	0.7	1.1	PG4-2M				

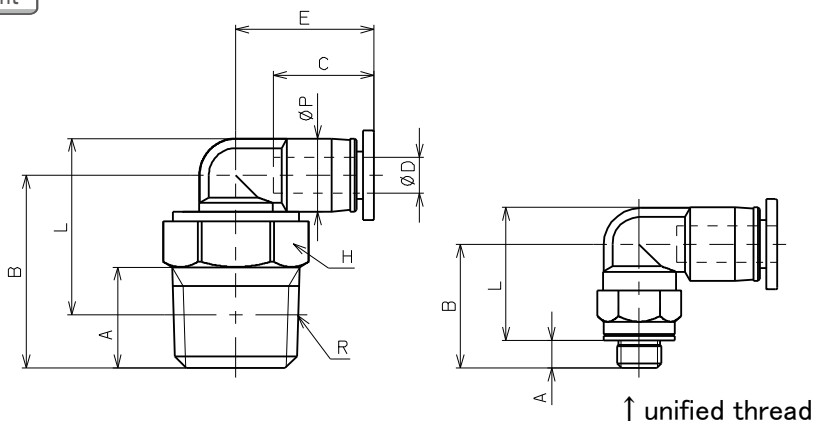
※ 1. ④ in Model code / Replaced with "W" for Light-gray color and/or "C" for Clean-room package.

❖ Ask us for the dimensions of PG1/4-6M or PG3/16-1/8M



# Elbow

RoHS compliant



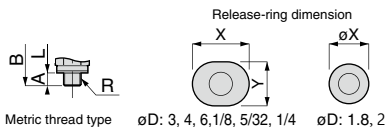
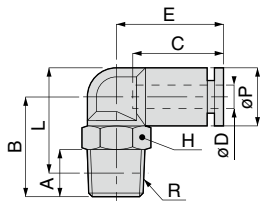
## ❖ NPT and UNF

unit: inch

Model	Tube O.D. ϕ D	R	A	B	L	ϕ P	C	E	Hex.	Orifice ϕ (mm)	Wt. (g)	CAD file name
PL3-U10MU	3	10-32UNF	0.12	0.53	0.57	0.31	0.43	0.59	5/16	2.4	3.4	PL3-U10MU
PL3-N1MU	3	1/8-27NPT	0.31	0.63	0.63	0.31	0.43	0.59	7/16	2.5	7	PL3-N1MU
PL4-U10MU	4	10-32UNF	0.12	0.53	0.57	0.31	0.43	0.59	5/16	2.4	3.3	PL4-U10MU
PL4-N1MU	4	1/8-27NPT	0.31	0.63	0.63	0.31	0.43	0.59	7/16	2.5	6.9	PL4-N1MU
PL6-U10MU	6	10-32UNF	0.12	0.57	0.66	0.41	0.46	0.63	5/16	2.4	4	PL6-U10MU
PL6-N1MU	6	1/8-27NPT	0.31	0.67	0.71	0.41	0.46	0.63	7/16	4.0	7.6	PL6-N1MU
PL1/8-U10MU	1/8	10-32UNF	0.12	0.53	0.57	0.31	0.43	0.59	5/16	2.4	3.4	PL1_8-U10MU
PL1/8-N0MU	1/8	1/16-27NPT	0.31	0.73	0.72	0.31	0.43	0.59	7/16	2.5	7.5	PL1_8-N0MU
PL1/8-N1MU	1/8	1/8-27NPT	0.31	0.63	0.63	0.31	0.43	0.59	7/16	2.5	7	PL1_8-N1MU
PL1/8-N2MU	1/8	1/4-18NPT	0.43	0.83	0.76	0.31	0.43	0.59	9/16	2.5	18	PL1_8-N2MU
PL5/32-U10MU	5/32	10-32UNF	0.12	0.53	0.57	0.31	0.43	0.59	5/16	2.4	3.3	PL5_32-U10MU
PL5/32-N0MU	5/32	1/16-27NPT	0.31	0.73	0.72	0.31	0.43	0.59	7/16	2.5	7.5	PL5_32-N0MU
PL5/32-N1MU	5/32	1/8-27NPT	0.31	0.63	0.63	0.31	0.43	0.59	7/16	2.5	7	PL5_32-N1MU
PL5/32-N2MU	5/32	1/4-18NPT	0.43	0.83	0.76	0.31	0.43	0.59	9/16	3.0	13	PL5_32-N2MU
PL1/4-U10MU	1/4	10-32UNF	0.12	0.57	0.66	0.41	0.45	0.64	5/16	2.4	3.9	PL1_4-U10MU
PL1/4-N0MU	1/4	1/16-27NPT	0.31	0.77	0.81	0.41	0.45	0.64	7/16	3.5	8	PL1_4-N0MU
PL1/4-N1MU	1/4	1/8-27NPT	0.31	0.67	0.71	0.41	0.45	0.64	7/16	4.0	7.5	PL1_4-N1MU
PL1/4-N2MU	1/4	1/4-18NPT	0.43	0.87	0.85	0.41	0.45	0.64	9/16	4.0	18	PL1_4-N2MU
PL1/4-N3MU	1/4	3/8-18NPT	0.47	0.92	0.88	0.41	0.45	0.64	11/16	4.0	22	PL1_4-N3MU

## PL Mini Elbow

RoHS compliant



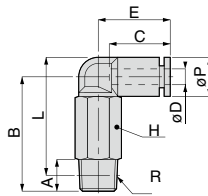
Unit : mm

Model code	Tube O.D. $\phi D$	R	A	B	L	$\phi P$	Tube end C	E	Hex. H	X ( $\phi X$ )	Y	Effective area (mm <sup>2</sup> )	Weight (g)	CAD file name						
PL180-M3M④	1.8	M3×0.5	2.5 [2.2]	12	12.5 [12.8]	6	8.4	10.3	5.5	4.8	-	0.5	1.4	PL180-M3M						
PL180-M5M④		M5×0.8	3 [3.2]	13.5	13.5 [13.3]				8			0.7	2.8	PL180-M5M						
PL3-M3M④	3	M3×0.5	2.5 [2.2]	12	12.5 [12.8]	6	9.3	10.8	5.5	7	6	0.5	1.4	PL3-M3M						
PL3-M5M④		M5×0.8	3 [3.2]	13.5	13.5 [13.3]				8			1.8	2.8	PL3-M5M						
PL3-M6M④		M6×1	3.9	14.5	13.6							3.1	3.1	PL3-M6M						
PL3-01M④		R1/8	8	16	16				8			11	15.1	10	9.8	7.8	2.4	6.3	PL3-01M	
PL4-M3M④	4	M3×0.5	2.5 [2.2]	14	15.5 [15.8]	8	11	15.1	8	9.8	7.8	1.3	3	PL4-M3M						
PL4-M5M④		M5×0.8	3 [3.2]	13.5	14.5 [14.3]								2.2	3.4	PL4-M5M					
PL4-M6M④		M6×1	3.9	14.5	14.6								3.9	3.7	PL4-M6M					
PL4-01M④		R1/8	8	16	16							4.8	6.2	PL4-01M						
PL4-02M④		R1/4	11	21	19							4.9	13	PL4-02M						
PL6-M5M④	6	M5×0.8	3 [3.2]	14.5	16.8 [16.6]	10.5	11.6	16	8	11.8	9.8	3.5	4.1	PL6-M5M						
PL6-M6M④		M6×1	3.9	15.5	16.9							3.6	4.4	PL6-M6M						
PL6-01M④		R1/8	8	17	18.3							8.5	6	PL6-01M						
PL6-02M④		R1/4	11	22.3	21.5							8.4	13	PL6-02M						
PL6-03M④		R3/8	12	23.3	22.2							8.6	21	PL6-03M						
PL1/8-M3M④		1/8	M3×0.5	2.5 [2.2]	14				15.5 [15.8]			8	11	15.1	8	9.8	7.8	0.9	3.1	PL1_8-M3M
PL1/8-M5M④	M5×0.8		3 [3.2]	13.5	14.5 [14.3]		2.7	3.5	PL1_8-M5M											
PL1/8-M6M④	M6×1		3.9	14.5	14.6		2.5	3.8	PL1_8-M6M											
PL1/8-01M④	R1/8		8	16	16		2	6.3	PL1_8-01M											
PL5/32-M3M④	5/32	M3×0.5	2.5 [2.2]	14	15.5 [15.8]	8	11	15.1	8	9.8	7.8	1.3	3	PL5_32-M3M						
PL5/32-M5M④		M5×0.8	3 [3.2]	13.5	14.5 [14.3]								2.8	3.4	PL5_32-M5M					
PL5/32-M6M④		M6×1	3.9	14.5	14.6								3	3.7	PL5_32-M6M					
PL5/32-01M④		R1/8	8	16	16							3.2	6.2	PL5_32-01M						
PL5/32-02M④		R1/4	11	21	19							4.9	13	PL5_32-02M						
PL1/4-M5M④	1/4	M5×0.8	3 [3.2]	14.5	16.8 [16.6]	10.5	11.4	16.2	8	11.8	9.8	3	4.1	PL1_4-M5M						
PL1/4-M6M④		M6×1	3.9	15.5	16.9								3.7	4.2	PL1_4-M6M					
PL1/4-M7M④		M7×1	Ask us for the dimensions																	
PL1/4-01M④		R1/8	8	17	18.3							10	11.8	9.8	8.4	6.8	6.8	PL1_4-01M		
PL1/4-02M④		R1/4	11	22.3	21.5				10.5			11.4				16.2	14	13	13	PL1_4-02M
PL1/4-03M④		R3/8	12	23.3	22.2							17				8.6	21	21	21	PL1_4-03M
PL2-M3M④	2	M3×0.5	2.5 [2.2]	12	12.5 [12.8]	6	8.4	10.3	5.5	4.8	-	0.5	1.4	PL2-M3M						
PL2-M5M④		M5×0.8	3 [3.2]	13.5	13.5 [13.3]				8			0.7	2.8	PL2-M5M						
PL2-01M④		R1/8	8	16	15							10	5.6	5.6	5.6	5.6	PL2-01M			
PL180-01M④	1.8	R1/8	8	16	15	6	8.4	10.3	10	4.8	-	0.7	5.5	PL180-01M						

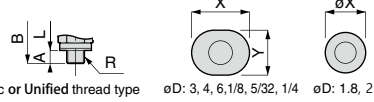
\* 1. ④ in Model code / Replaced with "W" for Light-gray color and/or "C" for Clean-room package

\* 2. "L" is a reference value for height dimension after tightening taper thread.

\* 3. Dimensions in [ ] are for clean-room package products



Release-ring dimension



Metric or Unified thread type

øD: 3, 4, 6, 1/8, 5/32, 1/4 øD: 1.8, 2

unit: inch

❖ NPT and UNF

Model	Tube O.D. ø D	R	A	B	L	ø P	C	E	Hex.	Orifice ø (mm)	Wt. (g)	CAD file name
PLL1/8-U10MU	1/8	10-32UNF	0.12	0.98	1.02	0.31	0.43	0.59	5/16	2.4	8	PLL1_8-U10MU
PLL1/8-N0MU	1/8	1/16-27NPT	0.31	1.12	1.12	0.31	0.43	0.59	7/16	2.5	16	PLL1_8-N0MU
PLL1/8-N1MU	1/8	1/8-27NPT	0.31	1.12	1.12	0.31	0.43	0.59	7/16	2.5	16	PLL1_8-N1MU
PLL5/32-U10MU	5/32	10-32UNF	0.12	0.98	1.02	0.31	0.43	0.59	5/16	2.4	7.9	PLL5_32-U10MU
PLL5/32-N0MU	5/32	1/16-27NPT	0.31	1.12	1.12	0.31	0.43	0.59	7/16	2.5	16	PLL5_32-N0MU
PLL5/32-N1MU	5/32	1/8-27NPT	0.31	1.12	1.12	0.31	0.43	0.59	7/16	2.5	16	PLL5_32-N1MU
PLL5/32-N2MU	5/32	1/4-18NPT	0.43	1.32	1.25	0.31	0.43	0.59	9/16	3.0	27	PLL5_32-N2MU
PLL1/4-U10MU	1/4	10-32UNF	0.12	1.02	1.11	0.41	0.45	0.64	5/16	2.4	8.5	PLL1_4-U10MU
PLL1/4-N0MU	1/4	1/16-27NPT	0.31	1.26	1.31	0.41	0.45	0.64	7/16	3.5	18	PLL1_4-N0MU
PLL1/4-N1MU	1/4	1/8-27NPT	0.31	1.16	1.20	0.41	0.45	0.64	7/16	4.0	17	PLL1_4-N1MU
PLL1/4-N2MU	1/4	1/4-18NPT	0.43	1.37	1.35	0.41	0.45	0.64	9/16	4.0	27	PLL1_4-N2MU
PLL1/4-N3MU	1/4	3/8-18NPT	0.47	1.41	1.37	0.41	0.45	0.64	11/16	4.0	43	PLL1_4-N3MU

Unit : mm

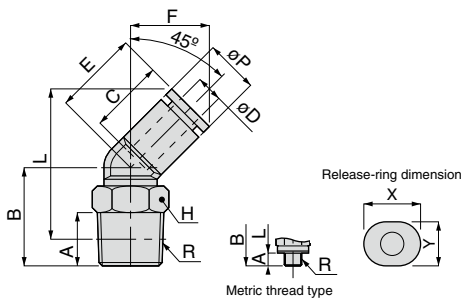
Model code	Tube O.D. øD	R	A	B	L	øP	Tube end C	E	Hex. H	X (øX)	Y	Effective area (mm <sup>2</sup> )	Weight (g)	CAD file name		
PLL180-M3M④	1.8	M3 × 0.5	2.5 [2.2]	19	19.5 [19.8]	6	8.4	10.3	5.5	4.8	-	0.5	2.7	PLL180-M3M		
PLL180-M5M④		M5 × 0.8	3 [3.2]	25	26 [24.8]				8					0.6	7.6	PLL180-M5M
PLL3-M3M④	3	M3 × 0.5	2.5 [2.2]	19	19.5 [19.8]	6	9.3	10.8	5.5	7	6	0.6	2.8	PLL3-M3M		
PLL3-M5M④		M5 × 0.8	3 [3.2]	25	26 [24.8]				8					1.8	7.7	PLL3-M5M
PLL3-M6M④		M6 × 1	3.9	26	26.1 [26]				2.1					7.7	PLL3-M6M	
PLL3-01M④		R1/8	8	28.5	28.5				8					11	15.1	10
PLL4-M3M④	4	M3 × 0.5	2.5 [2.2]	23	24.5 [24.8]	8	11	15.1	8	9.8	7.8	0.9	6.8	PLL4-M3M		
PLL4-M5M④		M5 × 0.8	3 [3.2]	25	26 [25.8]				3					8.3	PLL4-M5M	
PLL4-M6M④		M6 × 1	3.9	26	26.1 [26]				3.7					8.4	PLL4-M6M	
PLL4-01M④		R1/8	8	28.5	28.5				10					4.2	14	PLL4-01M
PLL4-02M④	R1/4	11	33.5	31.5	14	4.9	26	PLL4-02M								
PLL6-M5M④	6	M5 × 0.8	3 [3.2]	26	28.3 [28.1]	10.5	11.6	16	8	11.8	9.8	3.3	9	PLL6-M5M		
PLL6-M6M④		M6 × 1	3.9	27	28.4 [28.3]				3.7					7.6	14	PLL6-M6M
PLL6-01M④		R1/8	8	29.5	30.8				10					7.6	14	PLL6-01M
PLL6-02M④		R1/4	11	34.8	34				14					26	PLL6-02M	
PLL6-03M④	R3/8	12	35.8	34.7	17	8.3	40	PLL6-03M								
PLL1/8-M3M④	1/8	M3 × 0.5	2.5 [2.2]	23	24.5 [24.8]	8	11	15.1	8	9.8	7.8	0.9	6.8	PLL1_8-M3M		
PLL1/8-M5M④		M5 × 0.8	3 [3.2]	25	26 [25.8]				2.5					8.4	PLL1_8-M5M	
PLL1/8-M6M④		M6 × 1	3.9	26	26.1				2.1					7.7	PLL1_8-M6M	
PLL1/8-01M④		R1/8	8	28.5	28.5				10					2.3	13	PLL1_8-01M
PLL5/32-M3M④	5/32	M3 × 0.5	2.5 [2.2]	23	24.5 [24.8]	8	11	15.1	8	9.8	7.8	0.9	6.8	PLL5_32-M3M		
PLL5/32-M5M④		M5 × 0.8	3 [3.2]	25	26 [25.8]				3					8.3	PLL5_32-M5M	
PLL5/32-M6M④		M6 × 1	3.9	26	26.1 [26]				3.7					8.4	PLL5_32-M6M	
PLL5/32-01M④		R1/8	8	28.5	28.5				10					4.2	14	PLL5_32-01M
PLL5/32-02M④	R1/4	11	33.5	31.5	14	4.9	26	PLL5_32-02M								
PLL1/4-M5M④	1/4	M5 × 0.8	3 [3.2]	26	28.3 [28.1]	10.5	11.4	16.2	8	11.8	9.8	3.5	8.8	PLL1_4-M5M		
PLL1/4-M6M④		M6 × 1	3.9	27	28.4 [28.3]				3.6					8.8	PLL1_4-M6M	
PLL1/4-01M④		R1/8	8	29.5	30.8				10					8.4	14	PLL1_4-01M
PLL1/4-02M④		R1/4	11	34.8	34				14					26	PLL1_4-02M	
PLL1/4-03M④	R3/8	12	35.8	34.7	17	8.3	40	PLL1_4-03M								

Ask us for 2mm O.D. sizes if interested

## PLH 45° Elbow

Mini

RoHS compliant



Unit : mm

Model code	Tube O.D. øD	R	A	B	L	øP	Tube end C	E	F	Hex. H	X	Y	Effective area (mm <sup>2</sup> )	Weight (g)	CAD file name
PLH3-M3M④	3	M3 × 0.5	2.5 [2.2]	12.8	22.3 [22.6]	8	11	12.2	12	8	9.8	7.8	0.8	2.9	PLH3-M3M
PLH3-M5M④		M5 × 0.8	3 [3.2]	12.3	21.3 [21.1]								1.9	3.3	PLH3-M5M
PLH4-M3M④	4	M3 × 0.5	2.5 [2.2]	12.8	22.3 [22.6]	8	11	12.2	12	8	9.8	7.8	1	2.8	PLH4-M3M
PLH4-M5M④		M5 × 0.8	3 [3.2]	12.3	21.3 [21.1]								2.9	3.3	PLH4-M5M
PLH4-M6M④		M6 × 1	3.9	13.3	21.4					4	3.6	PLH4-M6M			
PLH4-O1M④		R1/8	8	14.8	22.8					5	6.1	PLH4-O1M			
PLH6-M5M④	6	M5 × 0.8	3 [3.2]	14.1	23.9 [23.7]	10.5	11.6	12.3	12.8	8	11.8	9.8	3.6	3.9	PLH6-M5M
PLH6-M6M④		M6 × 1	3.9	15.1	24								3.8	4.2	PLH6-M6M
PLH6-O1M④		R1/8	8	16.6	25.4					8.7	6.8	PLH6-O1M			
PLH6-O2M④		R1/4	11	21.6	28.4					8.7	18	PLH6-O2M			

※ 1. ④ in Model code / Replaced with "W" for Light-gray color and/or "C" for Clean-room package

※ 2. "L" is a reference value for height dimension after tightening taper thread.

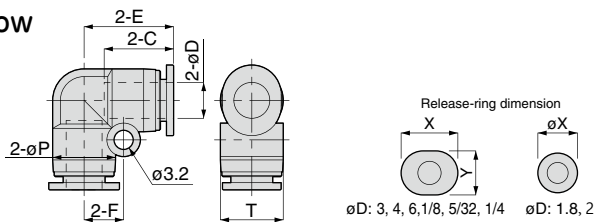
※ 3. Dimensions in [ ] are for clean-room package products

※ 4. Visit PISCO website for CAD data of clean-room package products.

## PV Union Elbow

Mini

RoHS compliant



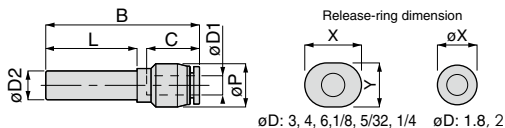
øD: 3, 4, 6, 1/8, 5/32, 1/4    øD: 1.8, 2    Unit : mm

Model code	Tube O.D. øD	øP	Tube end C	E	F	T	X (øX)	Y	Effective area (mm <sup>2</sup> )	Weight (g)	CAD file name
PV180M④	1.8	6	8.4	10.3	4.5	6	4.8	—	0.7	1.2	PV180M
PV2M④	2	6	8.4	10.3	4.5	6	4.8	—	0.7	1.1	PV2M
PV3M④	3	6	9.3	10.8	4.5	6	7	6	2.3	1.2	PV3M
PV4M④	4	8	11	13.1	5.6	8	9.8	7.8	4.8	2.3	PV4M
PV6M④	6	10.5	11.6	15	6.6	10.5	11.8	9.8	9	3.6	PV6M
PV1/8M④	1/8	8	11	13.1	5.6	8	9.8	7.8	2.1	2.4	PV1_8M
PV5/32M④	5/32	8	11	13.1	5.6	8	9.8	7.8	4.8	2.3	PV5_32M
PV1/4M④	1/4	10.5	11.4	15.2	6.6	10.5	11.8	9.8	10.7	3.4	PV1_4M

※ 1. ④ in Model code / Replaced with "W" for Light-gray color and/or "C" for Clean-room package

# PGJ Mini Unequal Plug-in Straight

RoHS compliant



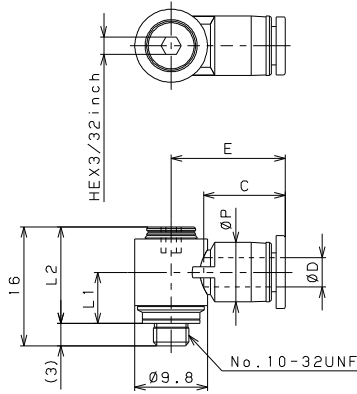
Unit : mm

Model code	Tube O.D. øD1	Tube dia. øD2	B	L	øP	Tube end C	X (øX)	Y	Effective area (mm <sup>2</sup> )	Weight (g)	CAD file name		
PGJ3-180M④	1.8	3	26.3	15	6	8.4	4.8	—	0.9	0.6	PGJ3-180M		
PGJ3-4M④	4		31	17	9	11	9.8	7.8		1.2	1.3	PGJ3-4M	
PGJ3-6M④	6		31.4		10.5	11.6	11.8	9.8			1.4	1.8	PGJ3-6M
PGJ3-1/8M④	1/8		31		9	11	9.8	7.8				1.4	PGJ3-1_8M
PGJ4-180M④	1.8	4	26.3	17	6	8.4	4.8	—	0.8	0.7	PGJ4-180M		
PGJ4-3M④	3		26.8			9.3	7	6		2.4	0.8	PGJ4-3M	
PGJ4-6M④	6		32.4	18	10.5	11.6	11.8	9.8	3.7	1.8	PGJ4-6M		
PGJ4-1/8M④	1/8		32		9	11	9.8	7.8	2.5	1.5	PGJ4-1_8M		
PGJ6-3M④	3	6	32	19	9	11	9.8	7.8	3.1	2.4	PGJ6-3M		
PGJ6-4M④	4										5.4	PGJ6-4M	
PGJ6-1/8M④	1/8										2.5	PGJ6-1_8M	
PGJ6-1/4M④	1/4										9.2	1.9	PGJ6-1_4M
PGJ1/8-5/32M④	5/32	1/8	31	17	9	11	9.8	7.8	1.2	1.3	PGJ1_8-5_32M		
PGJ1/8-1/4M④	1/4		31.6		10.5	11.4	11.8	9.8		1.7	PGJ1_8-1_4M		
PGJ5/32-1/8M④	1/8	5/32	32	18	9	11	9.8	7.8	2.5	1.5	PGJ5_32-1_8M		
PGJ5/32-1/4M④	1/4		32.6		10.5	11.4	11.8	9.8	3.7	1.7	PGJ5_32-1_4M		
PGJ3/16-1/8M④	1/8	3/16	34	21	9	11	9.8	7.8	2.5	1.6	PGJ3_16-1_8M		
PGJ3/16-5/32M④	5/32			20.5							3.4	1.5	PGJ3_16-5_32M
PGJ3/16-1/4M④	1/4		34.6	20.5	10.5	11.4	11.8	9.8	5	1.9	PGJ3_16-1_4M		
PGJ1/4-1/8M④	1/8	1/4	35.5	22.5	9	11	9.8	7.8	2.5	1.8	PGJ1_4-1_8M		
PGJ1/4-5/32M④	5/32								3.4	1.7	PGJ1_4-5_32M		
PGJ1/4-6M④	6				35.9	10.5	11.6	11.8	9.8	10.9	2.1	PGJ1_4-6M	
PGJ3-2M④	2	3	26.3	17	6	8.4	4.8	—	0.9	0.6	PGJ3-2M		
PGJ4-2M④	2	4	26.3	17	6	8.4	4.8	—	0.8	0.7	PGJ4-2M		

※ 1. ④ in Model code / Replaced with "W" for Light—gray color and/or "C" for Clean—room package

**POL Mini** Hex. Holed Banjo

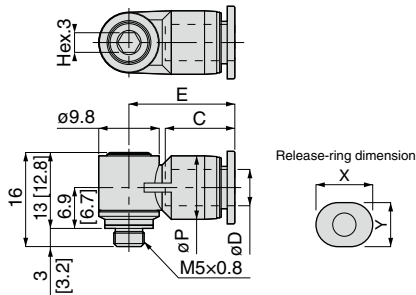
RoHS compliant



❖ UNF thread

unit: inch

Model	Tube O.D φD	L1	L2	φP	C	E	Orifice φ (mm)	Weight (g)	CAD file name
POL1/8-U10MU	1/8	0.27	0.51	0.31	0.43	0.61	2.4	5.1	POL1_8-U10MU
POL5/32-U10MU	5/32	0.27	0.51	0.31	0.43	0.61	2.4	5.1	POL5_32-U10MU



Unit : mm

Model code	Tube O.D. øD	øP	Tube end C	E	X	Y	Effective area (mm <sup>2</sup> )	Weight (g)	CAD file name(※4)
POL3-M5M④	3	8	11	15.4	9.8	7.8	2.1	5	POL3-M5M
POL4-M5M④	4	8	11	15.4	9.8	7.8	2.1	5	POL4-M5M
POL6-M5M④	6	10.5	11.6	17.5	11.8	9.8	2.1	6	POL6-M5M
POL1/8-M5M④	1/8	8	11	15.4	9.8	7.8	1.7	5	POL1_8-M5M
POL5/32-M5M④	5/32	8	11	15.4	9.8	7.8	2.1	5	POL5_32-M5M

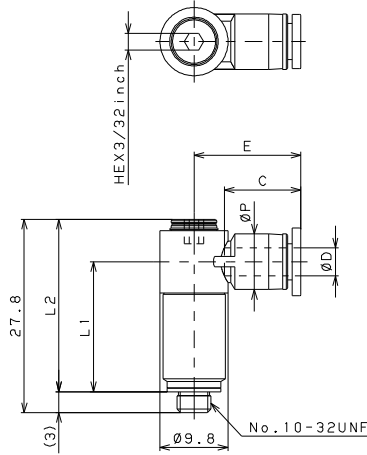
※ 1.④ in Model code / Replaced with "W" for Light-gray color and/or "C" for Clean-room package

※ 2. Dimensions in [ ] are for clean-room package products



Hex. Holed Long Banjo

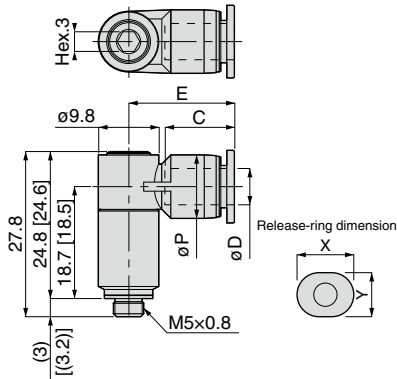
RoHS compliant



❖ UNF thread

unit: inch

Model	Tube O.D. $\phi D$	L1	L2	$\phi P$	C	E	Orifice $\phi$ (mm)	Wt. (g)	CAD file name
POLL1/8-U10MU	1/8	0.74	0.98	0.31	0.43	0.61	2.4	11	POLL1_8-U10MU
POLL5/32-U10MU	5/32	0.74	0.98	0.31	0.43	0.61	2.4	11	POLL5_32-U10MU



Unit : mm

Model code	Tube O.D. $\phi D$	$\phi P$	Tube end C	E	X	Y	Effective area ( $mm^2$ )	Weight (g)	CAD file name(※4)
POLL3-M5M④	3	8	11	15.4	9.8	7.8	2.1	11	POLL3-M5M
POLL4-M5M④	4	8	11	15.4	9.8	7.8	2.1	11	POLL4-M5M
POLL6-M5M④	6	10.5	11.6	17.5	11.8	9.8	2.1	13	POLL6-M5M
POLL1/8-M5M④	1/8	8	11	15.4	9.8	7.8	1.7	11	POLL1_8-M5M
POLL5/32-M5M④	5/32	8	11	15.4	9.8	7.8	2.1	11	POLL5_32-M5M

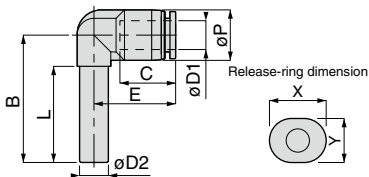
※ 1.④ in Model code / Replaced with "W" for Light-gray color and/or "C" for Clean-room package

※ 2. Dimensions in [ ] are for clean-room package products.



## PLJ Mini Plug-in Elbow

RoHS compliant



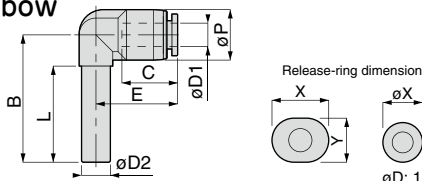
Unit : mm

Model code	Tube O.D. øD1	Tube dia. øD2	B	øP	Tube end C	E	L	X	Y	Effective area (mm <sup>2</sup> )	Weight (g)	CAD file name
PLJ3M④	3	3	24	9	11	14.1	17	9.8	7.8	1.2	1.1	PLJ3M
PLJ4M④	4	4	25	9	11	14.1	18	9.8	7.8	3.2	1.8	PLJ4M
PLJ6M④	6	6	26.5	10.5	11.6	17	20	11.8	9.8	5.1	3.1	PLJ6M
PLJ1/8M④	1/8	1/8	24	9	11	14.1	17	9.8	7.8	1.2	1.7	PLJ1_8M
PLJ5/32M④	5/32	5/32	25	9	11	14.1	18	9.8	7.8	2.9	1.7	PLJ5_32M
PLJ3/16M④	3/16	3/16	27.5	10.5	11.7	17.1	20.5	11.8	9.8	4.8	2.5	PLJ3_16M
PLJ1/4M④	1/4	1/4	29	10.5	11.4	17.2	22.5	11.8	9.8	8.2	2.4	PLJ1_4M

\*1. ④ in Model code / Replaced with "W" for Light-gray color and/or "C" for Clean-room package

## PLGJ Mini Unequal Plug-in Elbow

RoHS compliant



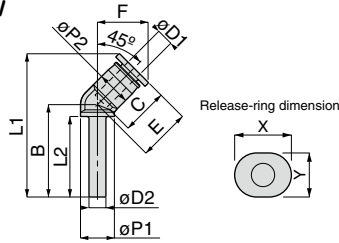
Unit : mm

Model code	Tube O.D. øD1	Tube dia. øD2	B	øP	Tube end C	E	L	X	Y	Effective area (mm <sup>2</sup> )	Weight (g)	CAD file name		
PLGJ3-180M④	1.8	3	21	6	8.4	10.3	17	4.8	—	0.9	0.7	PLGJ3-180M		
PLGJ3-4M④	4		24	9	11	14.1		9.8	7.8			1.6	PLGJ3-4M	
PLGJ3-6M④	6		24.5	10.5	11.6	17		11.8	9.8			2.2	PLGJ3-6M	
PLGJ3-1/8M④	1/8		24	9	11	14.1		9.8	7.8			1.7	PLGJ3-1/8M	
PLGJ4-180M④	1.8	4	21	6	8.4	10.3	17	4.8	—	0.9	0.8	PLGJ4-180M		
PLGJ4-3M④	3		25	9	11	14.1		9.8	7.8			2.3	1.8	PLGJ4-3M
PLGJ4-6M④	6		25.5	10.5	11.6	17		11.8	9.8			3.3	2.2	PLGJ4-6M
PLGJ4-1/8M④	1/8		25	9	11	14.1		9.8	7.8			2.3	1.9	PLGJ4-1_8M
PLGJ6-3M④	3	6	26	9	11	14.1	20	9.8	7.8	2.4	2.9	PLGJ6-3M		
PLGJ6-4M④	4											4.2	PLGJ6-4M	
PLGJ6-1/8M④	1/8											4.2	PLGJ6-1_8M	
PLGJ6-1/4M④	1/4											8.2	2.3	PLGJ6-1_4M
PLGJ1/8-3M④	3	1/8	24	9	11	14.1	17	9.8	7.8	1.2	1.7	PLGJ1_8-3M		
PLGJ1/8-5/32M④	5/32											1.6	PLGJ1_8-5_32M	
PLGJ1/8-1/4M④	1/4											2.1	PLGJ1_8-1_4M	
PLGJ5/32-1/8M④	1/8											2.5	1.7	PLGJ5_32-1_8M
PLGJ5/32-1/4M④	1/4	5/32	25.5	10.5	11.4	17.2	18	11.8	9.8	3.3	2.1	PLGJ5_32-1_4M		
PLGJ3/16-1/8M④	1/8											2.3	1.8	PLGJ3_16-1_8M
PLGJ3/16-5/32M④	5/32											2.9	1.7	PLGJ3_16-5_32M
PLGJ3/16-1/4M④	1/4											4.8	2.2	PLGJ3_16-1_4M
PLGJ1/4-1/8M④	1/8	1/4	28.5	9	11	14.1	22.5	9.8	7.8	2.4	6	PLGJ1_4-1_8M		
PLGJ1/4-5/32M④	5/32											2.9	1.9	PLGJ1_4-5_32M
PLGJ1/4-6M④	6											8.2	2.5	PLGJ1_4-6M
PLGJ3-2M④	2											3	21	6
PLGJ4-2M④	2	4	21	6	8.4	10.3	16.5	4.8	—	0.7	0.8	PLGJ4-2M		

\*1. ④ in Model code / Replaced with "W" for Light-gray color and/or "C" for Clean-room package

**PLHJ** Mini **45° Plug-in Elbow**

RoHS compliant



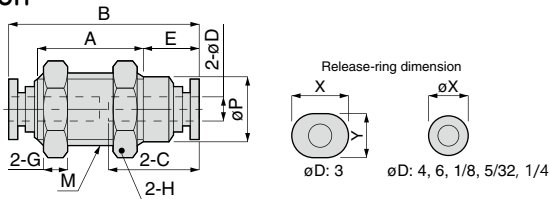
Unit : mm

Model code	Tube O.D. øD1	Tube dia. øD2	B	øP1	øP2	Tube end C	L1	L2	E	F	X	Y	Effective area (mm <sup>2</sup> )	Weight (g)	CAD file name
PLHJ4M <sup>④</sup>	4	4	21.8	8	8	11	33.8	18.5	12.2	12	9.8	7.8	3	1.3	PLHJ4M
PLHJ6M <sup>④</sup>	6	6	24.5	8	10.5	11.6	37.4	19.5	12.3	12.8	11.8	9.8	5.9	2.1	PLHJ6M

※ 1. ④ in Model code / Replaced with "W" for Light-gray color and/or "C" for Clean-room package

**PM** Mini **Bulkhead Union**

RoHS compliant



unit: inch

Model	Tube O.D. øD	M	B	E	A	øP	C	Hex.	G	Orifice ø (mm)	Weight (g)	CAD file name
PM1/8MU	1/8	7/16-20UNF	0.91	0.23	0.56	0.35	0.43	1/2	0.12	2.0	6.6	PM1_8MU
PM5/32MU	5/32	7/16-20UNF	0.91	0.23	0.56	0.35	0.43	1/2	0.12	3.0	6.5	PM5_32MU
PM1/4MU	1/4	1/2-20UNF	1.02	0.25	0.63	0.43	0.45	9/16	0.20	4.6	9.5	PM1_4MU

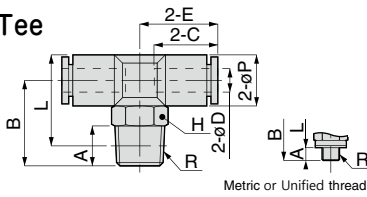
Unit : mm

Model code	Tube O.D. øD	M	B	E	A	øP	Tube end C	Hex. H	G	X (øX)	Y	Effective area (mm <sup>2</sup> )	Weight (g)	CAD file name
PM3M <sup>④</sup>	3	M8×0.75	19.5	4.8	12.4	7	9.4	10	2	7	6	2.4	3.1	PM3M
PM4M <sup>④</sup>	4	M10×1	23.2	5.8	14.1	8.9	10.9	12	3	7.8	—	3.7	6	PM4M
PM6M <sup>④</sup>	6	M12×1	25	6.6	14.8	10.8	11.7	14	4	9.8	—	10.5	9	PM6M
PM1/8M <sup>④</sup>	1/8	M10×1	23.2	5.8	14.1	8.9	10.9	12	3	7.8	—	2.1	6.1	PM1_8M
PM5/32M <sup>④</sup>	5/32	M10×1	23.2	5.8	14.1	8.9	10.9	12	3	7.8	—	3.7	6	PM5_32M
PM1/4M <sup>④</sup>	1/4	M12×1	24.6	6.4	14.8	10.8	11.4	14	4	9.8	—	11.2	8.8	PM1_4M
PM180M <sup>④</sup>	1.8	Ask us for the dimensions												
PM2M <sup>④</sup>	2													

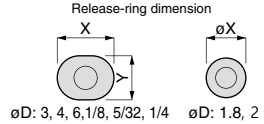
※ 1. ④ in Model code / Replaced with "W" for Light-gray color and/or "C" for Clean-room package



# Branch Tee



Metric or Unified thread type



## ❖ NPT and UNF

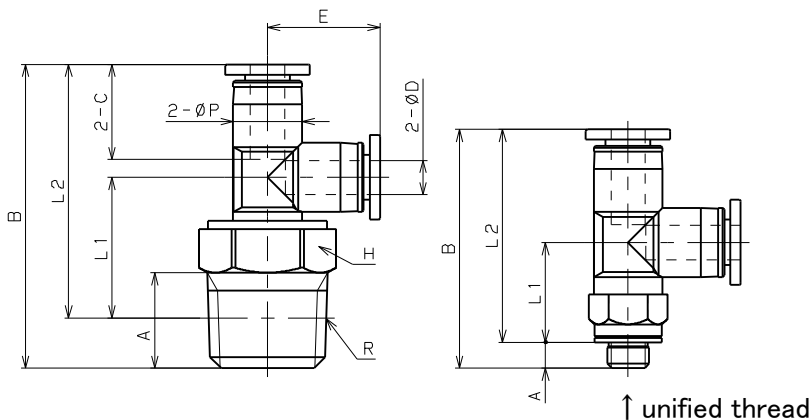
unit: inch

Model	O.D. øD	R	A	B	L	øP	C	E	Ex2	Hex.	Orifice ø (mm)	Wt (g)	CAD file name
PB1/8-U10MU	1/8	10-32UNF	0.12	0.57	0.61	0.31	0.43	0.49	0.98	5/16	2.5	4.4	PB1_8-U10MU
PB1/8-N0MU	1/8	1/16-27NPT	0.31	0.77	0.76	0.31	0.43	0.49	0.98	7/16	2.5	8.5	PB1_8-N0MU
PB1/8-N1MU	1/8	1/8-27NPT	0.31	0.67	0.67	0.31	0.43	0.49	0.98	7/16	2.5	8	PB1_8-N1MU
PB1/8-N2MU	1/8	1/4-18NPT	0.43	0.87	0.80	0.31	0.43	0.49	0.98	9/16	2.5	19	PB1_8-N1MU
PB5/32-U10MU	5/32	10-32UNF	0.12	0.57	0.61	0.31	0.43	0.49	0.98	5/16	2.5	4.3	PB5_32-U10MU
PB5/32-N0MU	5/32	1/16-27NPT	0.31	0.77	0.76	0.31	0.43	0.49	0.98	7/16	2.5	8.4	PB5_32-N0MU
PB5/32-N1MU	5/32	1/8-27NPT	0.31	0.67	0.67	0.31	0.43	0.49	0.98	7/16	2.5	7.9	PB5_32-N1MU
PB5/32-N2MU	5/32	1/4-18NPT	0.43	0.87	0.80	0.31	0.43	0.49	0.98	9/16	3.0	14	PB5_32-N2MU
PB1/4-U10MU	1/4	10-32UNF	0.12	0.61	0.70	0.41	0.45	0.56	1.11	5/16	2.5	5.3	PB1_4-U10MU
PB1/4-N0MU	1/4	1/16-27NPT	0.31	0.81	0.85	0.41	0.45	0.56	1.11	7/16	3.5	9.4	PB1_4-N0MU
PB1/4-N1MU	1/4	1/8-27NPT	0.31	0.71	0.75	0.41	0.45	0.56	1.11	7/16	4.0	8.9	PB1_4-N1MU
PB1/4-N2MU	1/4	1/4-18NPT	0.43	0.92	0.89	0.41	0.45	0.56	1.12	9/16	4.0	15	PB1_4-N2MU
PB1/4-N3MU	1/4	3/8-18NPT	0.47	0.96	0.92	0.41	0.45	0.56	1.12	11/16	4.0	24	PB1_4-N3MU

Unit : mm

Model code	Tube O.D. øD	R	A	B	L	øP	Tube end C	E	Hex. H	X (øX)	Y	Effective area (mm <sup>2</sup> )	Weight (g)	CAD file name
PB180-M3M <sup>④</sup>	1.8	M3 × 0.5	2.5 (2.2)	12	12.5 (12.8)	6	8.4	10.25	5.5	4.8	-	0.6	1.9	PB180-M3M
PB180-M5M <sup>④</sup>		M5 × 0.8	3 (3.2)	13.5	13.5 (13.3)				8			3.2	PB180-M5M	
PB3-M3M <sup>④</sup>	3	M3 × 0.5	2.5 (2.2)	12	12.5 (12.8)	6	9.3	10.8	5.5	7	6	0.7	1.9	PB3-M3M
PB3-M5M <sup>④</sup>		M5 × 0.8	3 (3.2)	13.5	13.5 (13.3)				8			2	3.3	PB3-M5M
PB3-M6M <sup>④</sup>		M6 × 1	3.9	14.5	13.6				1.9			3.6	PB3-M6M	
PB3-01M <sup>④</sup>		R1/8	8	17	17				8			11	12.5	10
PB4-M3M <sup>④</sup>	4	M3 × 0.5	2.5 (2.2)	15	16.5 (16.8)	8	11	12.5	8	9.8	7.8	1.4	3.9	PB4-M3M
PB4-M5M <sup>④</sup>		M5 × 0.8	3 (3.2)	14.5	15.5 (15.3)							3.7	4.3	PB4-M5M
PB4-M6M <sup>④</sup>		M6 × 1	3.9	15.5	15.6				2.8			4.6	PB4-M6M	
PB4-01M <sup>④</sup>		R1/8	8	17	17				10			4.6	7.2	PB4-01M
PB4-02M <sup>④</sup>		R1/4	11	22	20				14			4.4	13	PB4-02M
PB6-M5M <sup>④</sup>	6	M5 × 0.8	3 (3.2)	15.5	17.8 (17.6)	10.5	11.6	13.9	8	11.8	9.8	3.5	5.6	PB6-M5M
PB6-M6M <sup>④</sup>		M6 × 1	3.9	16.5	17.9							3.6	5.9	PB6-M6M
PB6-01M <sup>④</sup>		R1/8	8	18	19.3			10	8.5			8.4	PB6-01M	
PB6-02M <sup>④</sup>		R1/4	11	23.3	22.5			14	8.1			15	PB6-02M	
PB6-03M <sup>④</sup>		R3/8	12	24.3	23.2			17	8.5			22	PB6-03M	
PB1/8-M3M <sup>④</sup>	1/8	M3 × 0.5	2.5 (2.2)	15	16.5 (16.8)	8	11	12.5	8	9.8	7.8	0.9	4.1	PB1_8-M3M
PB1/8-M5M <sup>④</sup>		M5 × 0.8	3 (3.2)	14.5	15.5 (15.3)							2.1	4.4	PB1_8-M5M
PB1/8-M6M <sup>④</sup>		M6 × 1	3.9	15.5	15.6				2.2			4.7	PB1_8-M6M	
PB1/8-01M <sup>④</sup>		R1/8	8	17	17				10			2.3	7.3	PB1_8-01M
PB5/32-M3M <sup>④</sup>	5/32	M3 × 0.5	2.5 (2.2)	15	16.5 (16.8)	8	11	12.5	8	9.8	7.8	1.4	3.9	PB5_32-M3M
PB5/32-M5M <sup>④</sup>		M5 × 0.8	3 (3.2)	14.5	15.5 (15.3)							2.8	4.3	PB5_32-M5M
PB5/32-M6M <sup>④</sup>		M6 × 1	3.9	15.5	15.6				2.9			4.6	PB5_32-M6M	
PB5/32-01M <sup>④</sup>		R1/8	8	17	17				10			3.3	7.2	PB5_32-01M
PB5/32-02M <sup>④</sup>		R1/4	11	22	20				14			4.4	13	PB5_32-02M
PB1/4-M5M <sup>④</sup>	1/4	M5 × 0.8	3 (3.2)	15.5	17.8 (17.6)	10.5	11.4	14.1	8	11.8	9.8	3.3	5.3	PB1_4-M5M
PB1/4-M6M <sup>④</sup>		M6 × 1	3.9	16.5	17.9							3.6	5.6	PB1_4-M6M
PB1/4-01M <sup>④</sup>		R1/8	8	18	19.3			10	8			8.1	PB1_4-01M	
PB1/4-02M <sup>④</sup>		R1/4	11	23.3	22.5			14	8.1			15	PB1_4-02M	
PB1/4-03M <sup>④</sup>		R3/8	12	24.3	23.2			17	8.5			22	PB1_4-03M	

Ask us for 2mm O.D. sizes if interested



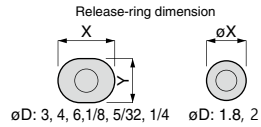
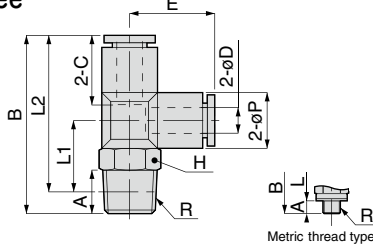
❖ NPT and UNF

unit: inch

Model	O.D. φD	R	A	B	L1	L2	φP	C	E	Hex.	Orifice φ(mm)	Wt (g)	CAD file name
PD1/8-U10MU	1/8	10-32UNF	0.12	1.09	0.45	0.97	0.31	0.43	0.52	5/16	2.4	4.4	PD1_8-U10MU
PD1/8-N0MU	1/8	1/16-27NPT	0.31	1.28	0.61	1.12	0.31	0.43	0.52	7/16	2.5	8.6	PD1_8-N0MU
PD1/8-N1MU	1/8	1/8-27NPT	0.31	1.19	0.51	1.02	0.31	0.43	0.52	7/16	2.5	8.1	PD1_8-N1MU
PD1/8-N2MU	1/8	1/4-18NPT	0.43	1.38	0.64	1.15	0.31	0.43	0.52	9/16	2.5	19	PD1_8-N1MU
PD5/32-U10MU	5/32	10-32UNF	0.12	1.09	0.45	0.97	0.31	0.43	0.52	5/16	2.4	4.3	PD5_32-U10MU
PD5/32-N0MU	5/32	1/16-27NPT	0.31	1.28	0.61	1.12	0.31	0.43	0.52	7/16	2.5	8.5	PD5_32-N0MU
PD5/32-N1MU	5/32	1/8-27NPT	0.31	1.19	0.51	1.02	0.31	0.43	0.52	7/16	2.5	8	PD5_32-N1MU
PD5/32-N2MU	5/32	1/4-18NPT	0.43	1.38	0.64	1.15	0.31	0.43	0.52	9/16	2.5	14	PD5_32-N2MU
PD1/4-U10MU	1/4	10-32UNF	0.12	1.21	0.49	1.09	0.41	0.45	0.60	5/16	2.4	5.4	PD1_4-U10MU
PD1/4-N0MU	1/4	1/16-27NPT	0.31	1.41	0.65	1.24	0.41	0.45	0.60	7/16	3.5	9.5	PD1_4-N0MU
PD1/4-N1MU	1/4	1/8-27NPT	0.31	1.31	0.55	1.14	0.41	0.45	0.60	7/16	4.0	9	PD1_4-N1MU
PD1/4-N2MU	1/4	1/4-18NPT	0.43	1.50	0.68	1.28	0.41	0.45	0.60	9/16	4.0	15	PD1_4-N2MU
PD1/4-N3MU	1/4	3/8-18NPT	0.47	1.54	0.70	1.30	0.41	0.45	0.60	11/16	4.0	24	PD1_4-N3MU

## PD Mini Run Tee

RoHS compliant



Unit : mm

Model code	Tube O.D. φD	R	A	B	L1	L2	φP	Tube end C	E	Hex. H	X (φX)	Y	Effective area (mm <sup>2</sup> )	Weight (g)	CAD file name	
PD180-M3M④	1.8	M3 × 0.5	2.5 [2.2]	22.3	9.5 [9.8]	19.8 [20.1]	6	8.4	10.3	5.5	4.8	-	0.6	1.9	PD180-M3M	
PD180-M5M④		M5 × 0.8	3 [3.2]	23.8	10.5 [10.3]	20.8 [20.6]				8			0.8	3.2	PD180-M5M	
PD3-M3M④	3	M3 × 0.5	2.5 [2.2]	22.8	9.5 [9.8]	20.3 [20.6]	6	9.3	10.8	5.5	7	6	0.7	1.9	PD3-M3M	
PD3-M5M④		M5 × 0.8	3 [3.2]	24.3	10.5 [10.3]	21.3 [21.1]				8			2.2	3.2	PD3-M5M	
PD3-M6M④		M6 × 1	3.9	25.3	10.6	21.4							2	3.6	PD3-M6M	
PD3-01M④*		R1/8	8	30.1	13	26.1				8			11	13.1	10	9.8
PD4-M3M④	4	M3 × 0.5	2.5 [2.2]	28.1	12.5 [12.8]	25.6 [25.9]	8	11	13.1	8	9.8	7.8	0.9	4	PD4-M3M	
PD4-M5M④		M5 × 0.8	3 [3.2]	27.6	11.5 [11.3]	24.6 [24.4]								2.1	4.4	PD4-M5M
PD4-M6M④		M6 × 1	3.9	28.6	11.6	24.7								2.2	4.7	PD4-M6M
PD4-01M④		R1/8	8	30.1	13	26.1							4.6	7.3	PD4-01M	
PD4-02M④		R1/4	11	35.1	16	29							3.3	14	PD4-02M	
PD6-M5M④	6	M5 × 0.8	3 [3.2]	30.5	12.5 [12.3]	27.5 [27.3]	10.5	11.6	15	8	11.8	9.8	2.2	5.6	PD6-M5M	
PD6-M6M④		M6 × 1	3.9	31.5	12.6	27.6								3.3	5.9	PD6-M6M
PD6-01M④		R1/8	8	33	14	29								8.5	8.4	PD6-01M
PD6-02M④		R1/4	11	38	17	31.9							6.6	15	PD6-02M	
PD6-03M④		R3/8	12	39	17.7	32.6							8.9	23	PD6-03M	
PD1/8-M3M④	1/8	M3 × 0.5	2.5 [2.2]	28.1	12.5 [12.8]	25.6 [25.9]	8	11	13.1	8	9.8	7.8	0.9	4.1	PD1_8-M3M	
PD1/8-M5M④		M5 × 0.8	3 [3.2]	27.6	11.5 [11.3]	24.6 [24.4]								2.4	4.5	PD1_8-M5M
PD1/8-M6M④		M6 × 1	3.9	28.6	11.6	24.7							2	4.8	PD1_8-M6M	
PD1/8-01M④		R1/8	8	30.1	13	26.1							2.5	7.4	PD1_8-01M	
PD5/32-M3M④	5/32	M3 × 0.5	2.5 [2.2]	28.1	12.5 [12.8]	25.6 [25.9]	8	11	13.1	8	9.8	7.8	0.9	4	PD5_32-M3M	
PD5/32-M5M④		M5 × 0.8	3 [3.2]	27.6	11.5 [11.3]	24.6 [24.4]								4.4	4.5	PD5_32-M5M
PD5/32-M6M④		M6 × 1	3.9	28.6	11.6	24.7								4.7	4.7	PD5_32-M6M
PD5/32-01M④		R1/8	8	30.1	13	26.1							7.3	7.3	PD5_32-01M	
PD5/32-02M④		R1/4	11	35.1	16	29							3.3	14	PD5_32-02M	
PD1/4-M5M④	1/4	M5 × 0.8	3 [3.2]	30.7	12.5 [12.3]	27.7 [27.5]	10.5	11.4	15.2	8	11.8	9.8	3.6	5.4	PD1_4-M5M	
PD1/4-M6M④		M6 × 1	3.9	31.7	12.6	27.8								3.7	5.6	PD1_4-M6M
PD1/4-01M④		R1/8	8	33.2	14	29.2								8.5	8.2	PD1_4-01M
PD1/4-02M④		R1/4	11	38.2	17	32.1							8.8	15	PD1_4-02M	
PD1/4-03M④		R3/8	12	39.2	17.7	32.8							8.9	23	PD1_4-03M	

※ 1. ④ in Model code / Replaced with "W" for Light-gray color and/or "C" for Clean-room package

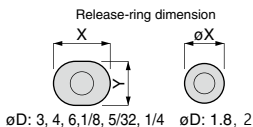
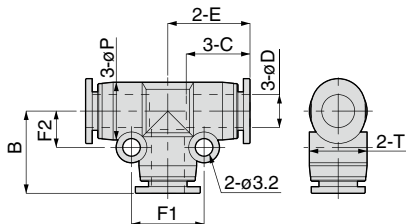
※ 2. "L" is a reference value for height dimension after tightening taper thread.

※ 3. Dimensions in [ ] are for clean-room package products

※ 4. Ask us for 2mm O.D. sizes if you are interested

## PE Mini Union Tee

RoHS compliant



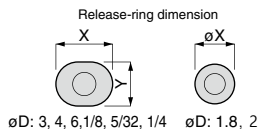
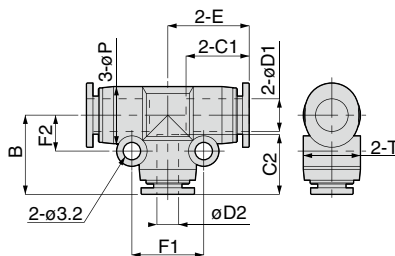
Unit : mm

Model code	Tube O.D. øD	B	øP	Tube end C	E	F1	F2	T	X (øX)	Y	Effective area (mm <sup>2</sup> )	Weight (g)	CAD file name
PE180M④	1.8	10.3	6	8.4	10.25	9	4.5	6	4.8	—	0.6	1.7	PE180M
PE2M④	2	10.3	6	8.4	10.25	9	4.5	6	4.8	—	0.6	1.6	PE2M
PE3M④	3	10.8	6	9.3	10.8	9	4.5	6	7	6	1.9	1.7	PE3M
PE4M④	4	13.1	8	11	13.05	11.2	5.6	8	9.8	7.8	4.6	3.3	PE4M
PE6M④	6	15	10.5	11.6	14.95	13.2	6.6	10.5	11.8	9.8	8.9	5.3	PE6M
PE1/8M④	1/8	13.1	8	11	13.05	11.2	5.6	8	9.8	7.8	2.1	3.4	PE1_8M
PE5/32M④	5/32	13.1	8	11	13.05	11.2	5.6	8	9.8	7.8	4.6	3.3	PE5_32M
PE1/4M④	1/4	15.2	10.5	11.4	15.15	13.2	6.6	10.5	11.8	9.8	11.4	5	PE1_4M

\*1. ④ in Model code / Replaced with "W" for Light-gray color and/or "C" for Clean-room package

## PEG Mini Unequal Union Tee

RoHS compliant



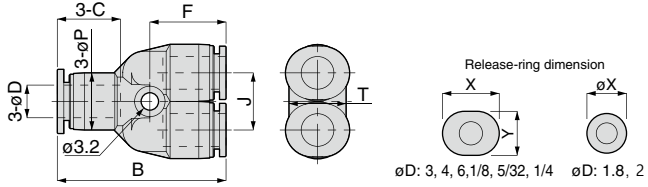
Unit : mm

Model code	Tube O.D. øD1	Tube O.D. øD2	B	øP	Tube end C1	Tube end C2	E	F1	F2	T	D1 release-ring X Y	D2 release-ring X(øX) Y	Effective area (mm <sup>2</sup> )	Weight (g)	CAD file name			
PEG3-180M④	3	1.8	10.3	6	9.3	8.4	10.8	9	4.5	6	7	6	4.8	—	1	1.7	PEG3-180M	
PEG3-4M④		4	13.1	8	11	11	13.05	11.2	5.6	8	9.8	7.8	9.8	7.8	1.7	3.4	PEG3-4M	
PEG4-3M④	4	3	13.1	8		11	13.05	11.2	5.6	8	9.8	7.8	9.8	7.8	2.4	3.3	PEG4-3M	
PEG4-6M④		6	15	10.5	11	11.6	14.55	13.2	6.6	10.5			11.8	9.8	7.8	3.7	4.9	PEG4-6M
PEG4-1/8M④		1/8	13.1	8		11	13.05	11.2	5.6	8			9.8	7.8	2.3	3.3	PEG4-1_8M	
PEG6-4M④	6	4	14.6	10.5	11.6	11	14.95	13.2	6.6	10.5	11.8	9.8	9.8	7.8	5.3	5.1	PEG6-4M	
PEG1/8-5/32M④	1/8	5/32	13.1	8	11	11	13.05	11.2	5.6	8	9.8	7.8	9.8	7.8	1.7	3.4	PEG1_8-5_32M	
PEG1/4-5/32M④	1/4	5/32	14.6	10.5	11.4	11	15.15	13.2	6.6	10.5	11.8	9.8	9.8	7.8	3.6	5.9	PEG1_4-5_32M	
PEG5/32-1/8M④	5/32	1/8	13.1	8		11	13.05	11.2	5.6	8	9.8	7.8	9.8	7.8	2.3	3.3	PEG5_32-1_8M	
PEG5/32-1/4M④		1/4	15.2	10.5		11.4	14.55	13.2	6.6	10.5			11.8	9.8	3.7	4.8	PEG5_32-1_4M	

\*1. ④ in Model code / Replaced with "W" for Light-gray color and/or "C" for Clean-room package

**PY** Mini Union Y

RoHS compliant



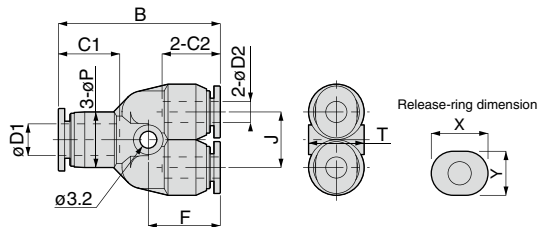
Unit : mm

Model code	Tube O.D. φD	B	φP	Tube end C	J	F	T	X	Y	Effective area (mm <sup>2</sup> )	Weight (g)	CAD file name
PY180M④	1.8	19.5	6	8.4	16.5	11.8	7.4	4.8	—	0.4	1.7	PY180M
PY2M④	2	19.5	6	8.4	16.5	11.8	7.4	4.8	—	0.6	1.7	PY2M
PY3M④	3	28	8	9.3	8	12.8	8	7	6	2	2.7	PY3M
PY4M④	4	27.6	8	11	8	12.6	8	9.8	7.8	2.3	3.4	PY4M
PY6M④	6	31	10.5	11.6	10.5	14	10.5	11.8	9.8	6.8	5.5	PY6M
PY1/8M④	1/8	27.6	8	11	8	12.6	8	9.8	7.8	1.1	3.6	PY1_8M
PY5/32M④	4	27.6	8	11	8	12.6	8	9.8	7.8	2.3	3.4	PY5_32M
PY1/4M④	1/4	31.4	10.5	11.4	10.5	14.2	10.5	11.8	9.8	9.6	5.3	PY1_4M

※1. ④ in Model code / Replaced with "W" for Light-gray color and/or "C" for Clean-room package

**PW** Mini Unequal Union Y

RoHS compliant



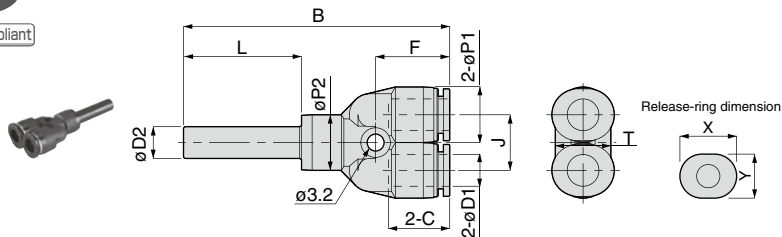
Unit : mm

Model code	Tube O.D. φD1	Tube O.D. φD2	B	φP	Tube end C1	Tube end C2	J	F	T	D1 側開放リング		D2 側開放リング		Effective area (mm <sup>2</sup> )	Weight (g)	CAD file name
										X	Y	X	Y			
PW4-3M④	4	3	27.8	8	11	9.3	8	12.8	8	9.8	7.8	7	6	2.1	3	PW4-3M
PW4-1/8M④		1/8	27.6	11	12.6	9.8						7.8	1.8	3.5	PW4-1_8M	
PW6-3M④	6	3	30.6	10.5	11.6	11	10.5	13.6	10.5	11.8	9.8	9.8	7.8	2.5	5.3	PW6-3M
PW6-4M④		4												4.2		PW6-4M
PW6-1/8M④		1/8												2.4	5.4	PW6-1_8M
PW1/8-3M④	1/8	3	27.6	8	11	11	8	12.6	8	9.8	7.8	9.8	7.8	1.7	3	PW1_8-3M
PW1/4-1/8M④	1/4	1/8	30.8	10.5	11.4	11	10.5	13.6	10.5	11.8	9.8	9.8	7.8	5.2	2.5	PW1_4-1_8M
PW1/4-5/32M④		5/32												3.6	6.9	PW1_4-5_32M
PW5/32-1/8M④		1/8												27.6	8	11

※1. ④ in Model code / Replaced with "W" for Light-gray color and/or "C" for Clean-room package

## PYJ Plug-in Y

RoHS compliant



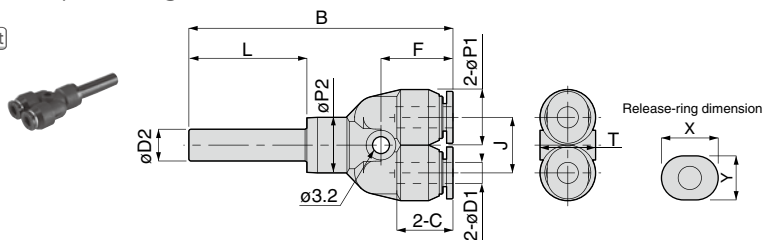
Unit : mm

Model code	Tube O.D. φD1	Tube dia. φD2	B	φP1	φP2	Tube end C	L	F	J	T	X	Y	Effective area (mm <sup>2</sup> )	Weight (g)	CAD file name
PYJ3M④	3	3	42.8	8	8	9.3	17.4	12.8	8	8	7	6	0.8	2.6	PYJ3M
PYJ4M④	4	4	45	8	8	11	19	12.6	8	8	9.8	7.8	2.2	3.2	PYJ4M
PYJ6M④	6	6	50.3	10.5	10.5	11.6	22	14	10.5	10.5	11.8	9.8	5.6	5.4	PYJ6M
PYJ1/8M④	1/8	1/8	42.6	8	8	11	16.6	12.6	8	8	9.8	7.8	1.1	3.2	PYJ1_8M
PYJ5/32M④	5/32	5/32	45	8	8	11	19	12.6	8	8	9.8	7.8	2.2	3.2	PYJ5_32M

※ 1. ④ in Model code / Replaced with "W" for Light-gray color and/or "C" for Clean-room package

## PWJ Unequal Plug-in Y

RoHS compliant



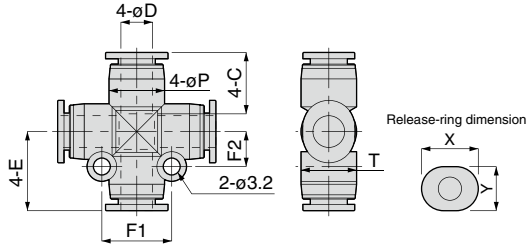
Unit : mm

Model code	Tube O.D. φD1	Tube dia. φD2	B	φP1	φP2	Tube end C	L	F	J	T	X	Y	Effective area (mm <sup>2</sup> )	Weight (g)	CAD file name
PWJ4-3M④	3	4	44.8	8	8	9.3	19	12.8	8	8	7	6	2.6	2.8	PWJ4-3M
PWJ4-1/8M④	1/8		44.6			11		12.6					1.7	3.3	PWJ4-1_8M
PWJ6-3M④	3	6	49.9	10.5	10.5	11	22	13.6	10.5	10.5	9.8	7.8	4.5	5.2	PWJ6-3M
PWJ6-4M④	4												5.3	5.1	PWJ6-4M
PWJ6-1/8M④	1/8												5.3	5.2	PWJ6-1_8M
PWJ5/32-1/8M④	1/8												5/32	44.6	8

※ 1. ④ in Model code / Replaced with "W" for Light-gray color and/or "C" for Clean-room package



**PZA** Cross A  
Mini  
RoHS compliant

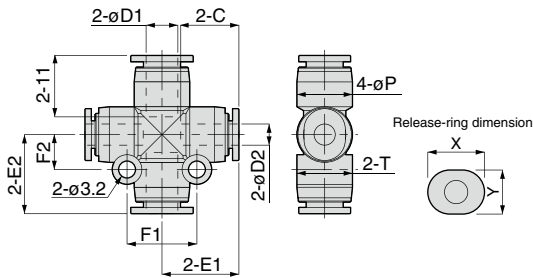


Unit : mm

Model code	Tube O.D. øD	E	øP	Tube end C	F1	F2	T	X	Y	Effective area (mm <sup>2</sup> )	Weight (g)	CAD file name
PZA3M ④⑤	3	13.05	8	11	11.2	5.6	8	9.8	7.8	2.2	4.6	PZA3M
PZA4M ④⑤	4	13.05	8	11	11.2	5.6	8	9.8	7.8	4.8	4.3	PZA4M
PZA6M ④⑤	6	14.95	10.5	11.6	13.2	6.6	10.5	11.8	9.8	8.8	6.7	PZA6M
PZA1/8M ④⑤	1/8	13.05	8	11	11.2	5.6	8	9.8	7.8	4.8	4.5	PZA1_8M
PZA5/32M ④⑤	5/32	13.05	8	11	11.2	5.6	8	9.8	7.8	4.8	4.3	PZA5_32M

- ※ 1. ④ in Model code / Replaced with "W" for Light-gray color
- ※ 2. ⑤ in Model code / Replaced with "C" for Clean-room package

**PZB** Cross B  
Mini  
RoHS compliant



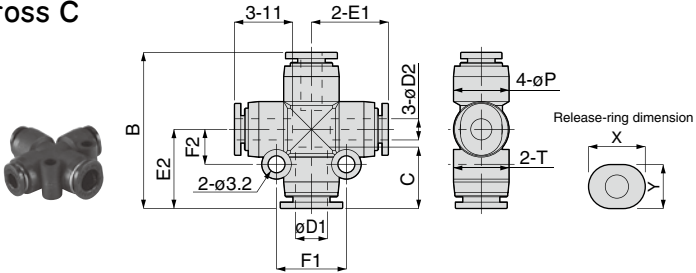
Unit : mm

Model code	Tube O.D. øD1	Tube O.D. øD2	E1	E2	øP	Tube end C	F1	F2	T	D1 release-ring		D2 release-ring		Effective area (mm <sup>2</sup> )	Weight (g)	CAD file name
										X	Y	X	Y			
PZB4-3M ④⑤	4	3	13.05	13.05	8	11	11.2	5.6	8	9.8	7.8	9.8	7.8	2.2	4.4	PZB4-3M
PZB4-1/8M ④⑤		1/8														
PZB6-4M ④⑤	6	4	14.55	14.95	10.5	11.6	13.2	6.6	10.5	11.8	9.8	7.8	5.3	6.5	PZB6-4M	
PZB6-1/8M ④⑤		1/8														PZB6-1_8M
PZB1/8-3M ④⑤	1/8	3	13.05	13.05	8	11	11.2	5.6	8	9.8	7.8	9.8	7.8	2.2	4.5	
PZB5/32-1/8M ④⑤	5/32	1/8	13.05	13.05	8	11	11.2	5.6	8	9.8	7.8	9.8	7.8	2.2	4.4	PZB5_32-1_8M

- ※ 1. ④ in Model code / Replaced with "W" for Light-gray color
- ※ 2. ⑤ in Model code / Replaced with "C" for Clean-room package

**PZC Mini Cross C**

RoHS compliant



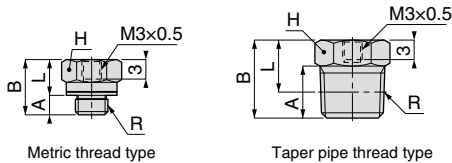
Unit : mm

Model code	Tube O.D. øD1	Tube O.D. øD2	B	E1	E2	øP	Tube end C	F1	F2	T	D1 release-ring		D2 release-ring		Effective area (mm <sup>2</sup> )	Weight (g)	CAD file name
											X	Y	X	Y			
PZC4-3M④	4	3	26.1	13.05	13.05	8	11	11.2	5.6	8	9.8	7.8	9.8	7.8	2.2	4.4	PZC4-3M
PZC4-1/8M④		1/8															PZC4-1_8M
PZC6-4M④	6	4	29.5	14.55	14.95	10.5	11.6	13.2	6.6	10.5	11.8	9.8	9.8	7.8	4.9	6.3	PZC6-4M
PZC6-1/8M④		1/8															PZC6-1_8M
PZC1/8-3M④	1/8	3	26.1	13.05	13.05	8	11	11.2	5.6	8	9.8	7.8	9.8	7.8	1.9	4.5	PZC1_8-3M
PZC5/32-1/8M④	5/32	1/8	26.1	13.05	13.05	8	11	11.2	5.6	8	9.8	7.8	9.8	7.8	2.2	4.4	PZC5_32-1_8M

※1. ④ in Model code / Replaced with "W" for Light-gray color and/or "C" for Clean-room package

**PF Mini Extension Screw Adaptor**

RoHS compliant



Unit : mm

Model code	R	A	B	L	Hex. H	Effective area (mm <sup>2</sup> )	Weight (g)	CAD file name
PFM5-M3M④	M5 × 0.8	3 [3.2]	8.5	5.5 [5.3]	8	4.5	2.4	PFM5-M3M
PF01-M3M④	R1/8	8	12	8	10	4.5	6.8	PF01-M3M

※1. ④ in Model code / Replaced with "C" for Clean-room package

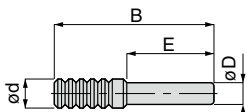
※2. "L" is a reference value for height dimension after tightening taper thread.

※3. Dimensions in [ ] are for clean-room package products

※4. Visit PISCO website for CAD data of clean-room package products.

## PP Mini Plug

RoHS compliant



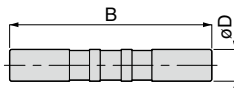
Unit : mm

Model code	$\phi D$	$\phi d$	B	E	Weight (g)	CAD file name
PP180M④	1.8	3	20	9.8	0.1	PP180M
PP2M④	2	3	20	9.8	0.1	PP2M
PP3M④	3	4	22	11.8	0.2	PP3M
PP1/8M④	1/8	4	22	11.8	0.2	PP1_8M

※ 1. ④ in Model code / Replaced with "W" for Light-gray color and/or "C" for Clean-room package

## PIJ Mini Union Stem

RoHS compliant



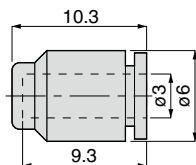
Unit : mm

Model code	Tube dia. $\phi D$	B	Effective area (mm <sup>2</sup> )	Weight (g)	CAD file name
PIJ3M④	3	27.1	2.5	0.2	PIJ3M
PIJ1/8M④	1/8	27.1	2.5	0.2	PIJ1_8M

※ 1. ④ in Model code / Replaced with "W" for Light-gray color and/or "C" for Clean-room package

## PPF Mini Cap

RoHS compliant



Metric thread type



Unit : mm

Model code	Weight (g)	CAD file name
PPF3M④	0.6	PPF3M

※ 1. ④ in Model code / Replaced with "W" for Light-gray color and/or "C" for Clean-room package

※ Ask for the dimensions of PPF180M and PPF2M

## ■ How to insert and disconnect

### 1. How to insert and disconnect tubes

#### ① Tube insertion

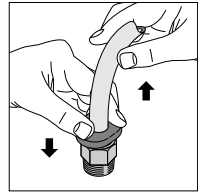
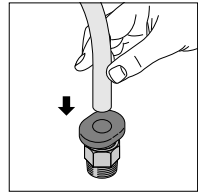
Insert a tube into Push-In Fitting up to the tube end. Lock-claws bite the tube and fix it automatically, then the elastic sleeve seals around the tube.

Refer to "2. Instructions for Tube Insertion" under "Common Safety Instructions for Fittings".

#### ② Tube disconnection

The tube is disconnected by pushing release-ring to release Lock-claws.

Make sure to stop air supply before the tube disconnection.



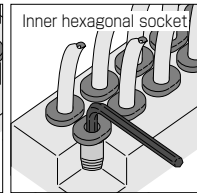
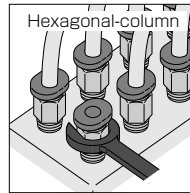
### 2. How to tighten thread

#### ① Tightening thread

There are two ways to tighten a thread. Use a spanner or an impact wrench for a hexagonal-column. A hex key is for an inner hexagonal socket. Inner hexagonal type can save spaces.

Refer to "Table 2: Recommended tightening torque / Sealock color / Gasket materials" under "4. Instructions for Installing a fitting" in "Common Safety Instructions for Fittings".

Note) The recommended torque force of the model code "POC180-M3M" is  $0.3\text{N}\cdot\text{m}$



## Safety Instructions

This Safety Instructions aim to prevent personal injury and damage to properties by requiring proper use of PISCO products.

Be certain to follow ISO 4414 and JIS B 8370.

ISO 4414 : Pneumatic fluid power...General rules and safety requirements for system and their components.

JIS B 8370: General rules and safety requirements for systems and their components.

This Safety instructions are classified into "Danger", "Warning" and "Caution", depending on the degree of danger or damages caused by improper use of PISCO products.



**Danger**

Hazardous conditions. It can cause death or serious personal injury.



**Warning**

Hazardous conditions depending on usages. Improper Use of PISCO products can cause death or serious personal injury.



**Caution**

Hazardous conditions depending on usages. Improper use of PISCO products can cause personal injury or damages to properties.

## **⚠ Warning**

1. Selection of pneumatic products.
  - ① A user who is a pneumatic system designer or has sufficient experience and technical expertise should select PISCO products.
  - ② Due to wide variety of operating conditions and applications for PISCO products, carry out the analysis and evaluation on PISCO products. The pneumatic system designer is solely responsible for assuring that the user's requirements are met and that the application presents no health or safety hazards. All designers are required to fully understand the specifications of PISCO products and constitute all systems based on the latest catalog or information, considering any malfunction.
2. The pneumatic equipments shall be handled by a person having enough knowledge and experiences.
  - ① Improper use of compressed air is dangerous. Assembly, operation and maintenance of machines using pneumatic equipment should be conducted by a person with enough knowledge and experience.
3. Do not operate machine / equipment or remove pneumatic equipment until safety is confirmed.
  - ① Make sure that preventive measures against falling work-pieces or sudden movements of machine are completed before inspection or maintenance of these machine
  - ② Make sure the above preventive measures are completed. A compressed air supply and the power supply to the machine must be off, and also the compressed air in the systems must be exhausted.
  - ③ Restart the machines with care after ensuring to take all preventive measures against sudden movements.

## **Warranty**

1. When the product produces a trouble, which is caused by our responsibility, we will carry out either one of the following measures immediately.
  - ① Free-of-charge replacement of same product
  - ② Free-of-charge repair of the product at our factory

## **Disclaimer**

When a cause of the trouble/malfunction applies to any of the following items, it is excluded from the coverage of the above warranty.

- ①. A case by a natural disaster, a fire except our responsibility, the act by the third person/party, the intention or fault of the customer.
- ②. A case when a product is used out of the specific range or in a method listed in the product catalog or the instruction manual.
- ③. A case by the remodeling of the product or by a change of structure, performance, or specifications which PISCO is not involved in.
- ④. A case by the event that is unpredictable by the evaluations and the measures at the time on or before the initial delivery.
- ⑤. A case caused by the phenomenon that is able to be evaded if your machine or equipment has functions or structures that are comprised in a common sense when this product is incorporated in your machine or equipment.

Additionally, the above warranty is limited simply to the product itself. The damage induced by the trouble of the product will not be compensated.



# Common Safety Instructions for Products Listed in This Catalog

PISCO products are designed and manufactured for use in general industrial machines.

## **Danger**

1. Do not use PISCO products for the following applications.
  - ① Equipment used for maintaining / handling human life and body.
  - ② Equipment used for moving / transporting human.
  - ③ Equipment specifically used for safety purposes.

## **Warning**

1. Do not use PISCO products under the following conditions.
  - ① Beyond the specifications or conditions stated in the catalog, or the instructions.
  - ② Use at outdoors.
  - ③ Excessive vibrations and impacts.
  - ④ Exposure / adhere to corrosive gas, flammable gas, chemicals, seawater, water and vapor.
    - \* Some products can be used under the condition above(④). Refer to the details of specifications and conditions of each product.
2. Do not disassemble or modify PISCO products, which affect the performance, function, and basic structure of the product.
3. Do not touch the release-ring of a push-in fitting when there is a working pressure. The lock may be released by the physical contact, and tube may fly out or slip out.
4. Frequent switchover of compressed air may generate heat, and there is a risk of causing burn injury.
5. Avoid any load on PISCO products, such as, a tensile strength, twisting and bending.
6. As for applications where threads or tubes swing / rotate, use Rotary Joints, High Rotary Joints or Multi-Circuit Rotary Block only. The other PISCO products can be damaged in these applications.
7. Use only Die Temperature Control Fitting Series, Tube Fitting Stainless SUS316 Series, Tube Fitting Stainless SUS316 Compression Fitting Series or Tube Fitting Brass Series under the condition of over 60°C (140 °F) water or heat medium oil. Other PISCO products can be damaged by heat and hydrolysis under the condition above.
8. As for the condition required to dissipate static electricity or provide an antistatic performance, use EG series fitting and antistatic products only, and do not use other PISCO products. There is a risk that static electricity can cause system defects or failures.

9. Use only Fittings with a characteristic of spatter-proof such as Anti-spatter or Brass series in a place where flame and weld spatter is produced. There is a risk of causing fire by sparks.
10. Turn off the power supply, stop the air supply to PISCO products, and make sure there is no residual air pressure in the pipes before maintenance and inspection. Follow the instructions below in order to ensure the safety.
  - ① Make sure the safety of all systems related to PISCO products before maintenance.
  - ② Restart of operation after maintenance shall be proceeded with care after ensuring the safety of the system by preventive measures against unexpected movements of machines and devices where pneumatic equipment is used.
  - ③ Keep enough space for maintenance when designing a circuit.
11. Take safety measures such as providing a protection cover if there is a risk of causing damages or fire on machine / facilities by a fluid leakage.

### **Caution**

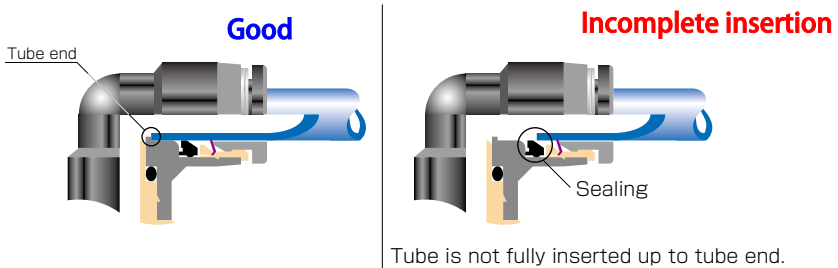
1. Remove dusts or drain before piping. They may get into the peripheral machine / facilities and cause malfunction.
2. When inserting an ultra-soft tube into a push-in fitting, make sure to place an Insert Ring into the tube edge. There is a risk of causing the escape of the tube and a fluid leakage without using an Insert Ring.
3. The product incorporating NBR as seal rubber material has a risk of malfunction caused by ozone crack. Ozone exists in high concentrations in static elimination air, clean-room, and near the high-voltage motors, etc. As a countermeasure, material change from NBR to HNBR or FKM is necessary.
4. Special option "Oil-free" products may cause a very small amount of a fluid leakage. When a fluid medium is liquid or the products are required to be used in harsh environments, contact us for further information.
5. In case of using non-PISCO brand tubes, make sure the tolerance of the outer tube diameter and tube hardness are within the limits of Table 1.

● Table 1. Tube O.D. Tolerance

mm size	Nylon tube (SHORE D63)	Polyurethane tube (SHORE A98)	inch size	Nylon tube (SHORE D63)	Polyurethane tube (SHORE A98)
ø1.8mm	—	± 0.05mm	ø1/8	± 0.1mm	± 0.15mm
ø2mm	—	± 0.05mm	ø5/32	± 0.1mm	± 0.15mm
ø3mm	—	± 0.15mm	ø3/16	± 0.1mm	± 0.15mm
ø4mm	± 0.1mm	± 0.15mm	ø1/4	± 0.1mm	± 0.15mm
ø6mm	± 0.1mm	± 0.15mm	ø5/16	± 0.1mm	± 0.15mm
ø8mm	± 0.1mm	± 0.15mm	ø3/8	± 0.1mm	± 0.15mm
ø10mm	± 0.1mm	± 0.15mm	ø1/2	± 0.1mm	± 0.15mm
ø12mm	± 0.1mm	± 0.15mm	ø5/8	± 0.1mm	± 0.15mm
ø16mm	± 0.1mm	± 0.15mm			

## 6. Instructions for Tube Insertion

- ① Make sure that the cut end surface of the tube is at a right angle without a scratch on the tube surface or deformations.
- ② When inserting a tube, the tube needs to be inserted fully into the push-in fitting until the tubing edge touches the tube end of the fitting as shown in the figure below. Otherwise, there is a risk of leakage.



- ③ After inserting the tube, make sure it is inserted properly and not to be disconnected by pulling it moderately.
- ※. When inserting tubes, Lock-claws may be hardly visible in the hole, observed from the front face of the release-ring. But it does not mean the tube will surely escape. Major causes of the tube escape are the followings; ① Shear drop of the lock-claws edge ② The problem of tube diameter (usually small). Therefore, follow the above instructions from ① to ③, even lock-claws is hardly visible.

## 7. Instructions for Tube Disconnection

- ① Make sure there is no air pressure inside of the tube, before disconnecting it.
- ② Push the release-ring of the push-in fitting evenly and deep enough to pull out the tube toward oneself. By insufficient pushing of the release-ring, the tube may not be pulled out or damaged by scratch, and tube shavings may remain inside of the fitting, which may cause the leakage later.

## 8. Instructions for installing a fitting

- ① When installing a fitting, use proper tools to tighten a hexagonal-column or an inner hexagonal socket. When inserting a hex key into the inner hexagonal socket of the fitting, be careful so that the tool does not touch lock-claws. The deformation of lock-claws may result in a poor performance of systems or an escape of the tube.
- ② Refer to Table 2 which shows the tightening torque. Do not exceed these limits to tighten a thread. Excessive tightening may break the thread part or deform the gasket to cause a fluid leakage. Tightening thread with tightening torque lower than these limits may cause a loosened thread or a fluid leakage.
- ③ Adjust the tube direction while tightening thread within these limits, since some PISCO products are not rotatable after the installation.



● Table 2: Tightening torque / Sealock color / Gasket materials

Thread type	Thread size	Tightening torque	Sealock color	Gasket material
Metric thread	M3 × 0.5	0.7N·m	—	SPCC+NBR SUS304+NBR
	M5 × 0.8	1 ~ 1.5N·m		
	M6 × 1	2 ~ 2.7N·m		
	M3 × 0.5	0.7N·m		POM
	M5 × 0.8	1 ~ 1.5N·m		
	M6 × 0.75	0.8 ~ 1N·m		
Taper pipe thread	M8 × 0.75	1 ~ 2N·m	White	—
	R1/8	4.5 ~ 6.5N·m		
	R1/4	7 ~ 9N·m		
	R3/8	12.5 ~ 14.5N·m		
Unified thread	R1/2	20 ~ 22N·m	—	SPCC+NBR, SUS304+NBR
	No.10-32UNF	1 ~ 1.5N·m		
National Pipe Thread Taper (American standard)	1/16-27NPT	4.5 ~ 6.5N·m	White	—
	1/8-27NPT	4.5 ~ 6.5N·m		
	1/4-18NPT	7 ~ 9N·m		
	3/8-18NPT	12.5 ~ 14.5N·m		
	1/2-14NPT	20 ~ 22N·m		

※ These values may differ for some products. Refer to each specification as well.

## 9. Instructions for removing a fitting

- ① When removing a fitting, use proper tools to loosen a hexagonal-column or an inner hexagonal socket. When inserting a hex key into the inner hexagonal socket of the fitting, be careful so that the tool does not touch lock-claws. The deformation of lock-claws may result in a poor performance of systems or an escape of the tube.
- ② Remove the sealant stuck on the mating equipment. The remained sealant may get into the peripheral equipment and cause malfunctions.

## 10. Arrange piping avoiding any load on fittings and tubes such as twist, tensile, moment load, shaking and physical impact. These may cause damages to fittings, tube deformations, bursting and the escape of tubes.

## 11. Instructions for handling a fitting

- ① Impact caused by dropping or the like may lead to damage to the product and a fluid leakage.