

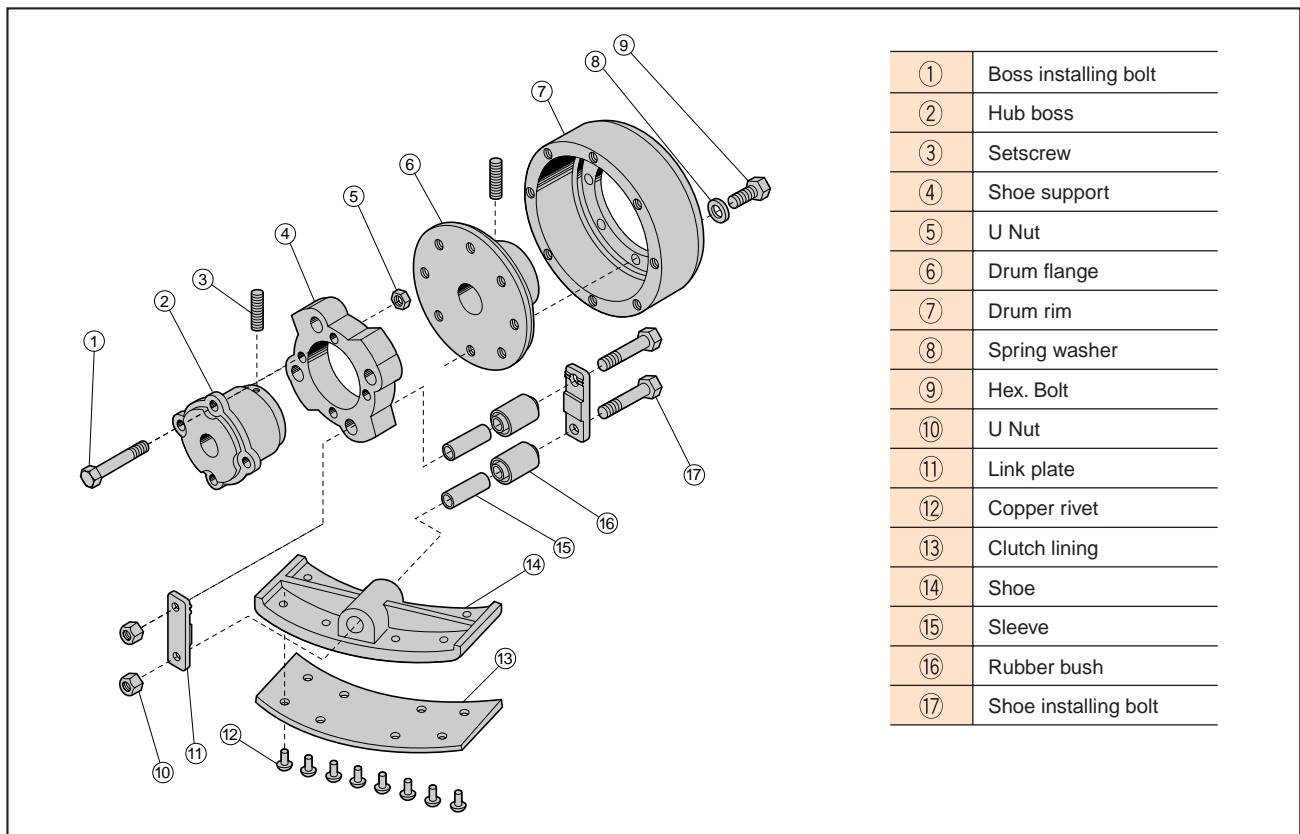
Driving boss is set at driving machine shaft.

And driving boss is fastened by shoe support and bolts.

Rubber bushes are pressed into shoe support and shoes.

Shoes and shoe support are fastened by link plates with bolts.

Non-Asbestos type linings are set at shoes so that they are able to touch drum.



Operation

Power could not be transmitted at driving machine stopping as drum and driving unit are not touching. When rotation speed of driven machine increases, shoe starts to be compressed to drum by centrifugal force and slips to driven machine transmitting power. And when rotation speed of driven machine becomes rated speed, there is no more slipping and make transmission of 100 % power.

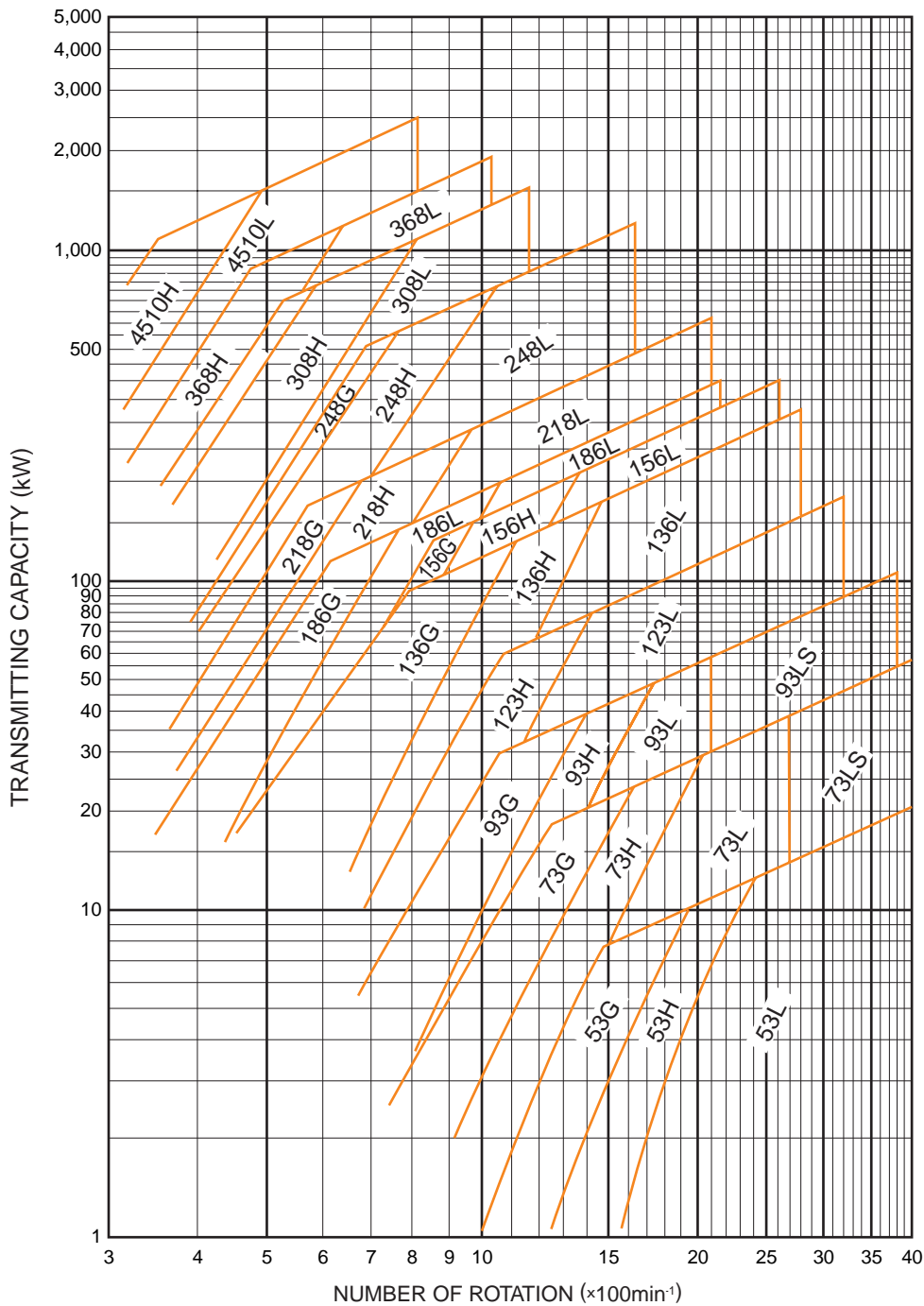


C-136



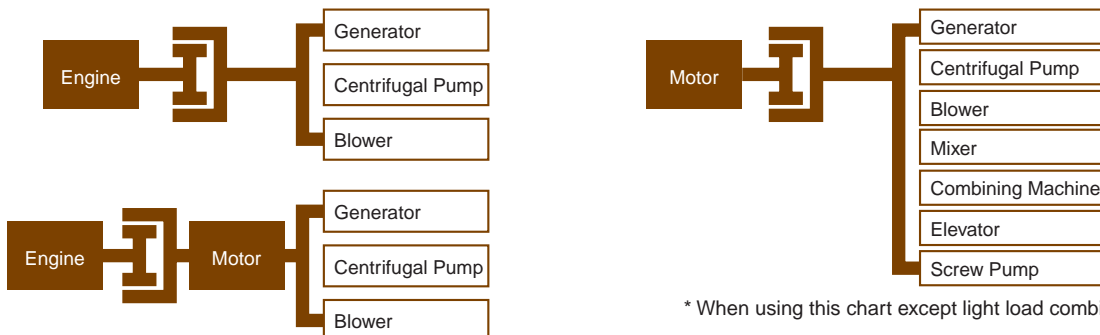
C-53

CENTRIFUGAL CLUTCH SIMPLE SELECTION CHART



This selection chart is for light load selecting curve (service factor 2).

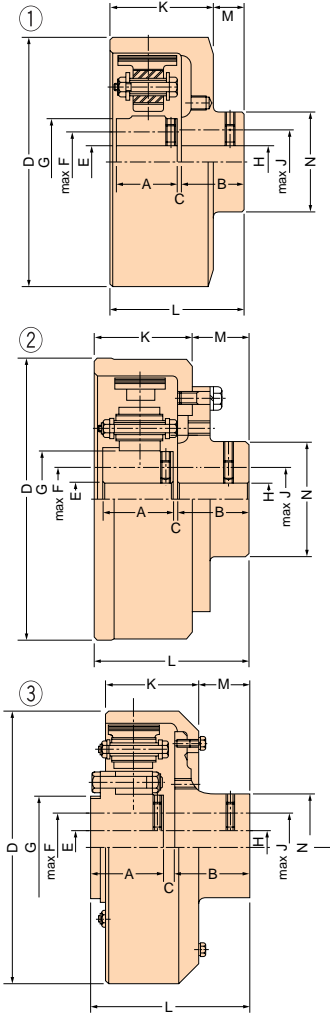
The example of light load combination



* When using this chart except light load combination, please consult. 4

Dimension Drawings

C TYPE



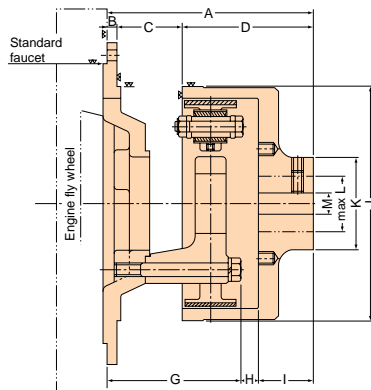
		unit:mm									
MARK	MODEL MARK	A	B	C	D	E	F	G	H	J	K
C - 53	①	38	45	10	161	15	35	60	15	35	80
C - 73	①	54	50	7	213	20	50	85	20	50	88
C - 93	①	67	65	7	270	20	70	115	20	70	102
C - 123	②	89	90	7	340	40	80	135	30	80	130
C - 136	②	100	90	6	367	40	85	160	30	85	130
C - 156	③	115	127	6	414	45	115	146	45	115	148
C - 186	③	150	152	8	494	65	127	196	65	150	176
C - 218	③	152	152	7	576	70	150	210	65	150	172
C - 248	③	172	153	6	656	70	165	235	70	165	238
C - 308	③	203	203	13	817	75	175	288	75	200	248
C - 368	③	254	254	12	984	100	200	292	100	200	283
C -4510	③	254	280	12	1,245	100	225	405	100	225	318

MARK	L	M	N	UNIT STANDARD SHAFT BORE DIA.	NUMBER OF ENGAGED ROTATION *50% rpm			WEIGHT kg	
					L SHOE	H SHOE	G SHOE	UNIT	DRUM
C - 53	107	27	70	35 ϕ H7	1,240	990	740	1.97	4.5
C - 73	120	32	85	45 ϕ H7	1,120	900	610	5.27	9.1
C - 93	149	47	130	55 ϕ H7	900	720	520	9.46	18.0
C - 123	200	70	143	65 ϕ H7	780	590	-	18.54	28.5
C - 136	200	70	143	80 ϕ H7	660	380	-	28.58	32.5
C - 156	248	94	178	-	620	450	370	46.56	54.7
C - 186	310	110	230	-	460	330	280	82.4	87.0
C - 218	311	112	230	-	420	300	240	92.3	116.0
C - 248	331	93	254	-	350	270	220	156.9	158.4
C - 308	419	133	305	-	240	170	160	291.0	287.6
C - 368	520	184	350	-	240	190	-	322.0	667.0
C -4510	546	228	349	-	160	120	100	640.0	1,090.0

*53-123 MAX Set, 136-4,510 MID Set

*We provide high engaged type for idling. Please contact us.

FA TYPE



		unit:mm										
MARK	MODEL MARK	A	B	C	D	G	H	I	J	K	L	M
FA - 53		130	9	14	107	77.0	8.0	45	161	70	35	15
FA - 73		186	9	57	120	119.0	17.0	50	213	85	50	20
FA - 93		220	11	60	149	129.0	26.0	65	270	130	70	20
FA -123		277	13	69	200	165.5	26.5	90	340	143	80	30
FA -136		282	15	67	200	165.5	26.5	90	367	143	85	30

*Remark : For manufacturing fly wheel adaptor, dimensions detail of fly wheel should be infomed.