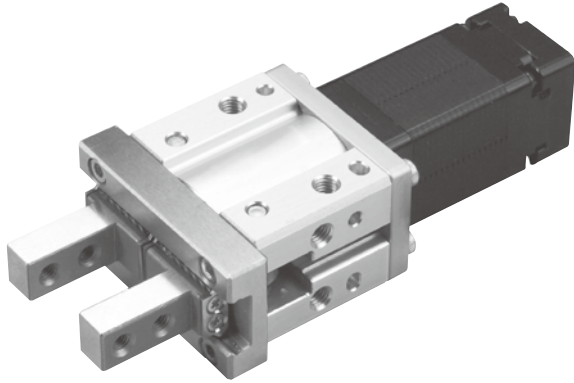


MEHC-20 series

ELECTRIC GRIPPER (WITH MOTOR)



Specification

Model	MEHC-20
Gripper force (N)	22~98
Open and close stroke (mm) (*1)	10
Open and close speed (mm/s)	5~50
Position repeatability (mm)	±0.02
Guide structure	Linear guide
Operating temperature range	0~+40°C
Operating humidity range (%)	Below RH90
Motor dimension (mm)	□25
Weight (g) (*2)	368

*1. Total stroke of both sides.
*2. Weight of model with motor.

Order example of gripper

MEHC-20 — **S10** — **TC100** — **03** — **A0001**

Model Spec. Type Corresponding controller Cable length Special order no.

Type	
S10	Standard type
N10	Narrow type

Cable length	
01	1 m
03	3 m
05	5 m
10	10 m

* Please refer to 4-118.

* Standard: 3 m

Order example of controller

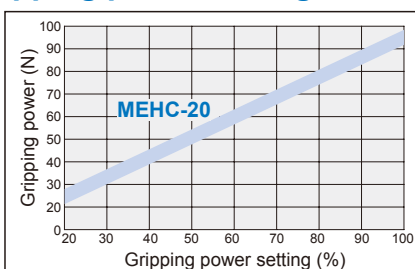
TC100 — **03**

Controller Cable length

Cable length	
Blank	No cable
01	1 m
03	3 m
05	5 m
10	10 m

* Standard: 3 m

Gripping power VS. Gripping power setting



Allowable moment and force (N.m / N)

Maximum moment	
MY	1.32 (N.m)
MP	1.32 (N.m)
MR	2.65 (N.m)
Maximum force	
FV	147 (N)

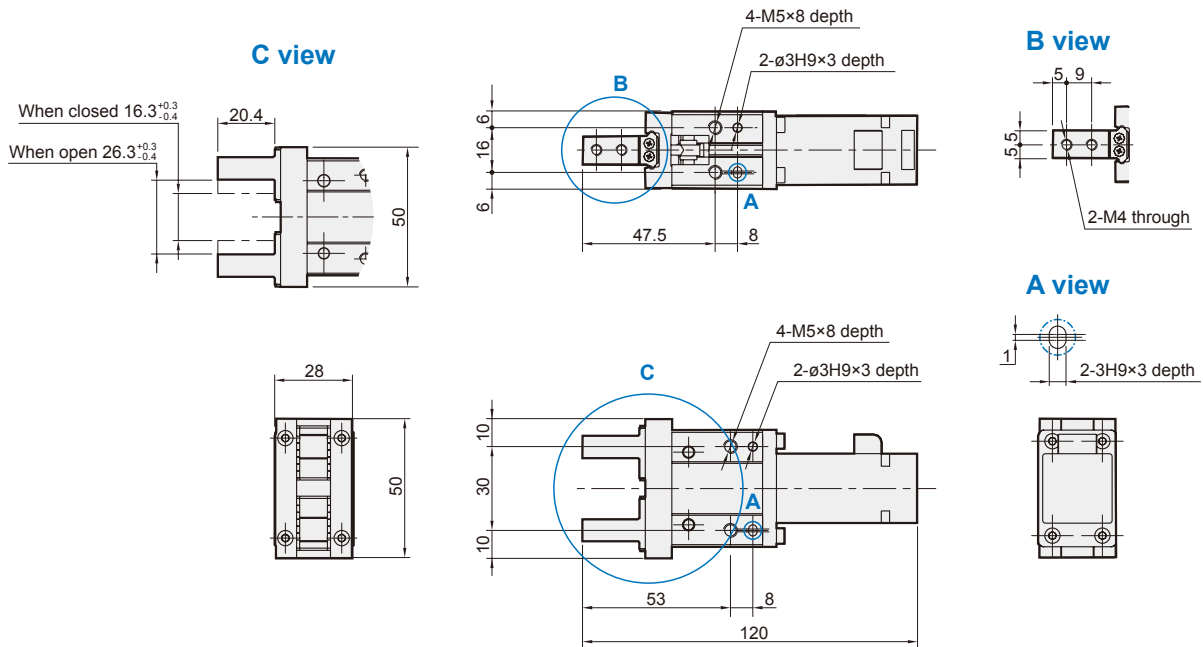
*MY: Allowable yawing moment
*MP: Allowable pitching moment
*MR: Allowable rolling moment
*FV: Vertical maximum force
*L: Distance to the loading location (mm).

MEHC-20 Dimensions

ELECTRIC GRIPPER (WITH MOTOR)



S10 Standard type



N10 Narrow type

