

Features

- 3 color digital LCD display.
- Copy function.
- Programmable pressure unit: kPa, MPa, kgf/cm², bar, psi, mmHg, inHg.
- Dual LCD display allow setting value to be displayed.
- Key lock indicator.
- Max. 20% energy saving.

Specification

Model	MP43C(Compound)	MP43V (Vacuum)	MP43P (Positive)
Rated pressure range	-100.0~100.0 kPa	-101.3 ~0.0 kPa	0 ~ 1.000 MPa
Set pressure range	-101.0~101.0 kPa	-101.3 ~ 10.0 kPa	-0.100 ~ 1.000 MPa
Withstand pressure	300 kPa		1.5 MPa
Fluid	Filtered air, Non-corrosive / Non-flammable gas		
Set pressure resolution	KPa / MPa	0.1 / —	— / 0.001
	kgf/cm ² / bar	0.001	0.01
	psi	0.01	0.1
	mmHg	1	—
	InHg	0.1	—
Power supply voltage	12 to 24V DC \pm 10%, Ripple (P-P) 10% or less		
Current consumption	\leq 40mA (With no load)		
Switch output	NPN: open collector 2 outputs Max. load current : 125mA Max. supply voltage: 30V DC Residual voltage : \leq 1.5V		PNP: open collector 2 outputs Max. load current : 125mA Max. supply voltage: 24V DC Residual voltage : \leq 1.5V
Repeatability (Switch output)	\pm 0.2% F.S. \pm 1digit		
Hysteresis	Hysteresis mode / Window comparator mode Adjustable(*1)		
Response time	\leq 2.5ms (chattering-proof function: 25ms, 100ms, 250ms, 500ms, 1000ms and 1500ms selectable)		
Output short circuit protection	Yes		
7 segment LCD display	2 color(Red/Green) main & unit display, Orange sub-dispaly (Sampling rate: 5 times/1sec.)		
Indicator accuracy	\pm 2% F.S. \pm 1 digit (Ambient temperature: 25 \pm 3°C)		
Switch ON Indicator	Orange (1 & 2 indicator) OUT1 / OUT2		
Analog output (Voltage Output) (*2)	Output Voltage: 1 to 5V \pm 2.5%F.S. (within rated pressure range) Linearity: \pm 1% F.S. Output impedance: about 1k Ω		
Analog output (Current Output) (*3)	Output Current: 4 to 20mA \pm 2.5%F.S. (within rated pressure range); Linearity: \pm 1% F.S. Max. load impedance: 300 Ω at power supply of 12V, 600 Ω at power supply of 24V Min. load impedance: 50 Ω		
Enclosure	IP40		
Ambient temp. range	Operation: 0 ~ 50°C, storage : -10~ 60°C (No condensation or freezing)		
Ambient humidity range	Operation/Storage: 35 ~ 85% RH (No condensation)		
Withstand voltage	1000V AC in 1-min. (between case and lead wire)		
Insulation resistance	50M Ω (at 500V DC, between case and lead wire)		
Vibration	Total amplitude 1.5mm or 10G,10Hz-55Hz-10Hz scan for 1 minute, 2 hours each direction of X, Y and Z		
Shock	100m/s ² (10G), 3 times each in direction of X, Y and Z		

(Continued)

Specification

Model	MP43C (Compound)	MP43V (Vacuum)	MP43P (Positive)
Temperature characteristic	±2.5% F.S. of detected pressure (25°C) at temp. Range of 0~50°C		
Port size	F1: R1/8, M5×0.8; F2: NPT1/8, #10~32UNF; F3: G1/8, M5×0.8		
Lead wire	Oil-resistance cable (0.15mm ²)		
Weight	Approx. 80g (with 2 meter lead wire)		

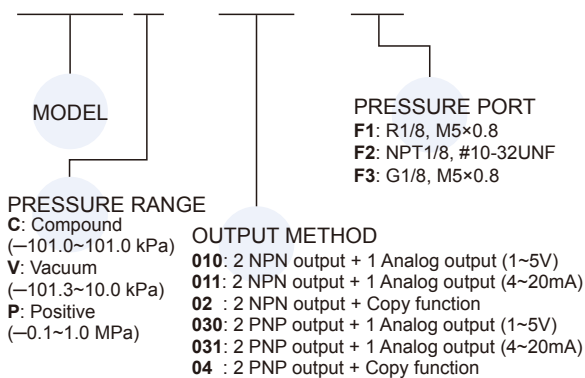
- *1. Hysteresis value is adjustable within 1~8 digits for one point set mode and window comparator mode.
- *2. If analog voltage output is selected, the analog current output cannot be selected at the same time.
- *3. If analog current output is selected, the analog voltage output cannot be selected at the same time.

Output circuit wiring graph

Model	MP43□-010	MP43□-011	MP43□-02
Connect diagram			
Output method	2 NPN+Analog(Voltage) output (1~5V)	2 NPN+Analog(Current) output (4~20mA)	2 NPN+Copy function
Model	MP43□-030	MP43□-031	MP43□-04
Connect diagram			
Output method	2 PNP+Analog(Voltage) output (1~5V)	2 PNP+Analog(Current) output (4~20mA)	2 PNP+Copy function

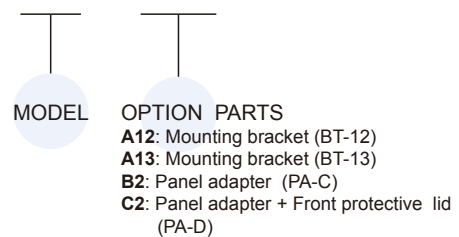
Order example

MP43C – 010 – F1

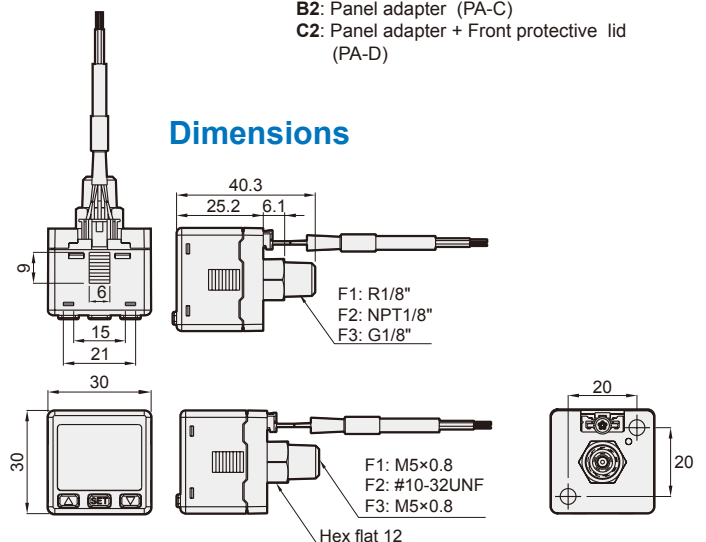


Mounting accessories

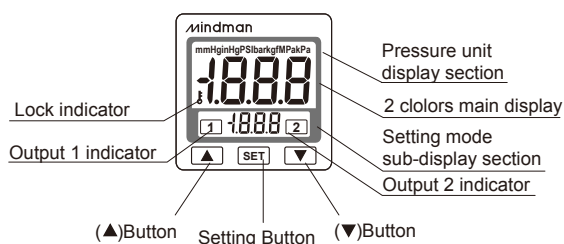
MP – A12



Dimensions

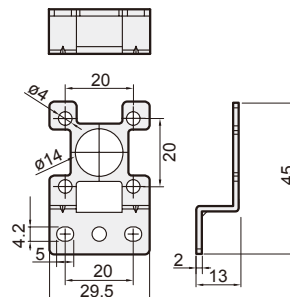
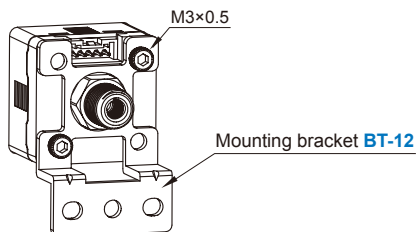


Panel instructions

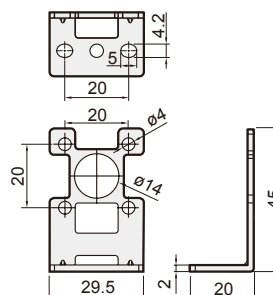
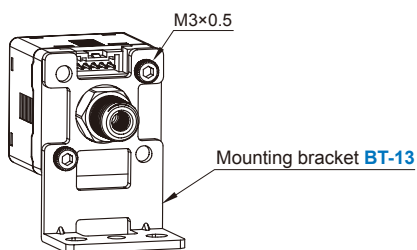


Mounting bracket

BT-12



BT-13



Panel type

