

MVSD1-180 series

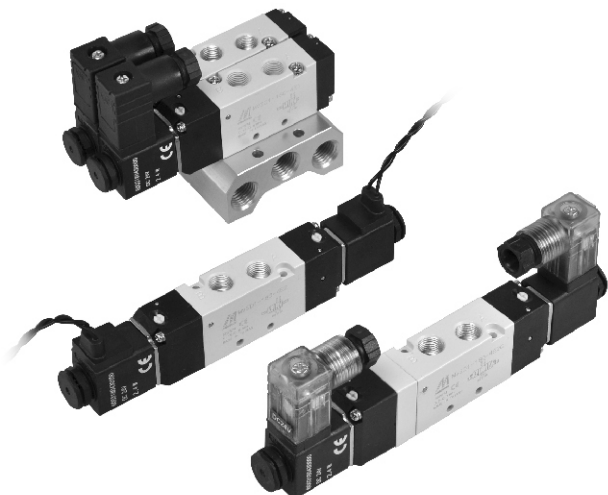
SOLENOID VALVE



mindman

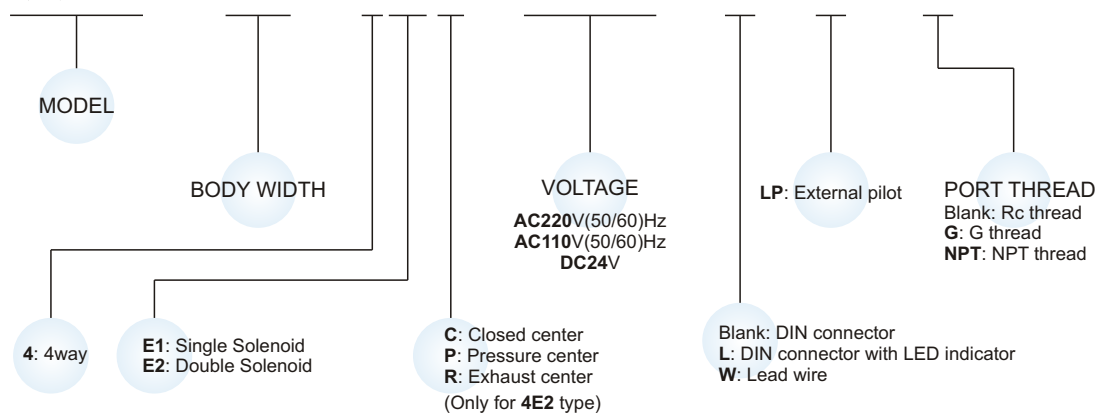
Specification

Model	4E1	4E2	4E2C.P.R
Bore No.	6A		
Port size	Rc1/8		
No. of port	5		
No. of position	2	3	
Medium	Air		
Operating pressure range	0.15~0.8 MPa	0.2~0.7 MPa	
Operating pressure (LP)	0~0.8 MPa	0~0.7 MPa	
External pilot pressure (LP)	0.15~0.8 MPa	0.2~0.7 MPa	
Proof pressure	1 MPa		
Effective orifice	12 mm ²	9 mm ²	
Response time	30 ms		
Ambient temperature	-5~+50°C (No freezing)		
Voltage	AC110V, 220V (50/60)Hz, DC24V		
Power consumption	AC=3.7/ 3.1VA, DC=2.9W		
Available voltage range	±10%		
Insulation class	F class		
Weight	124 g	176 g	190 g



Order example of valve

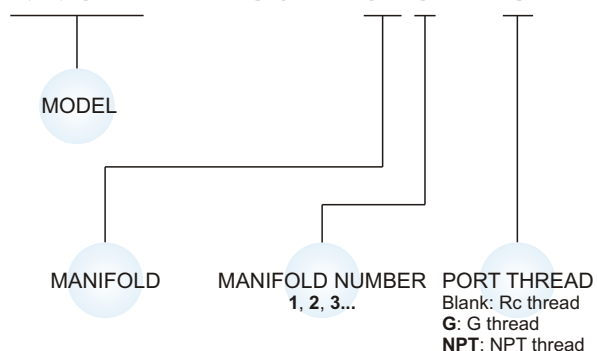
MVSD1 – 180 – 4E2C – AC110 – L – LP – G



Order example of manifold

4 way

MVSD1 – 180 – 5B3 – G

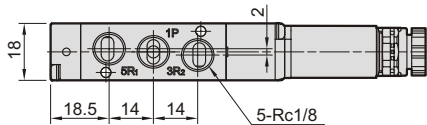
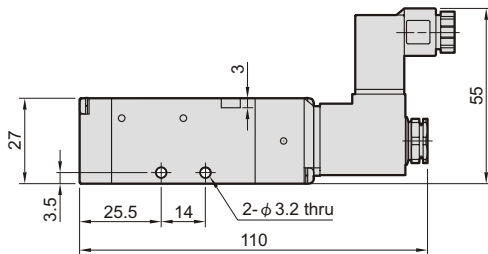
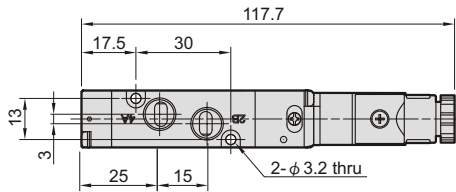
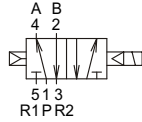


mindman

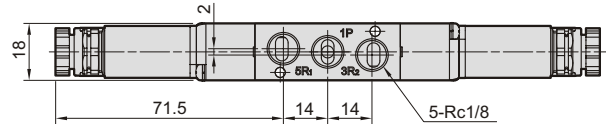
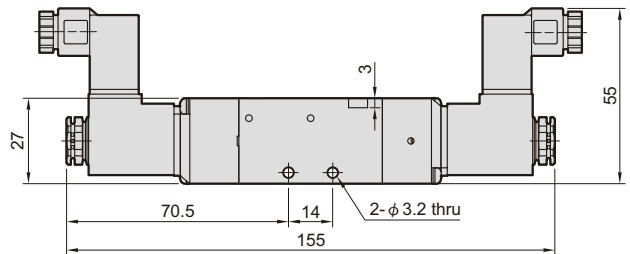
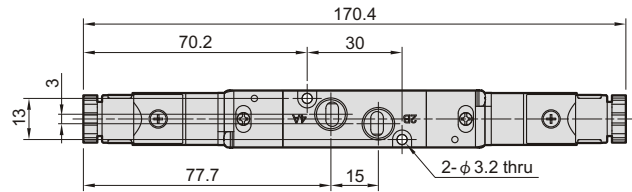
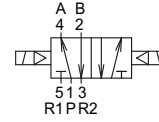
MVSD1-180 Dimensions

SOLENOID VALVE

MVSD1-180-4E1

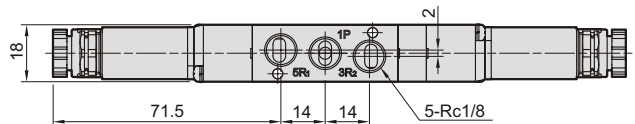
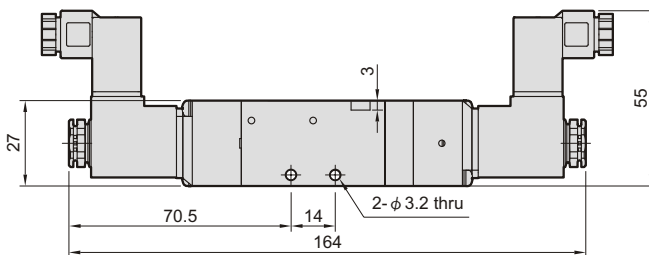
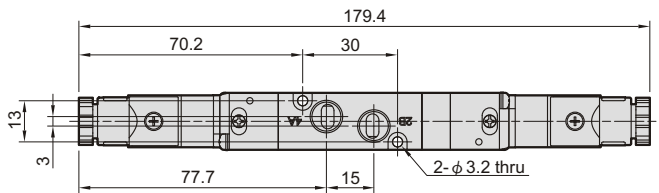
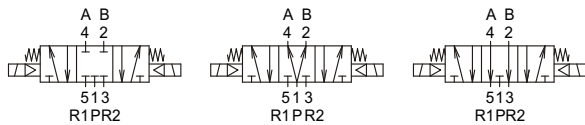


MVSD1-180-4E2

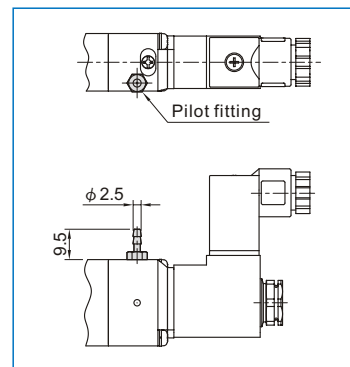


MVSD1-180-4E2C.PR

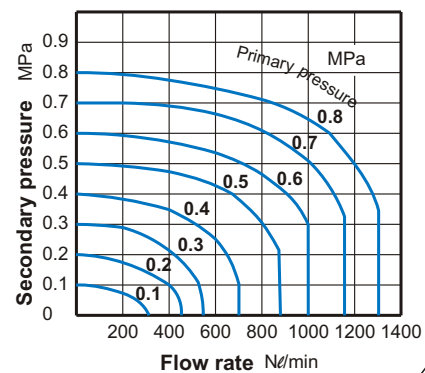
MVSD1-180-4E2C MVSD1-180-4E2P MVSD1-180-4E2R



LP



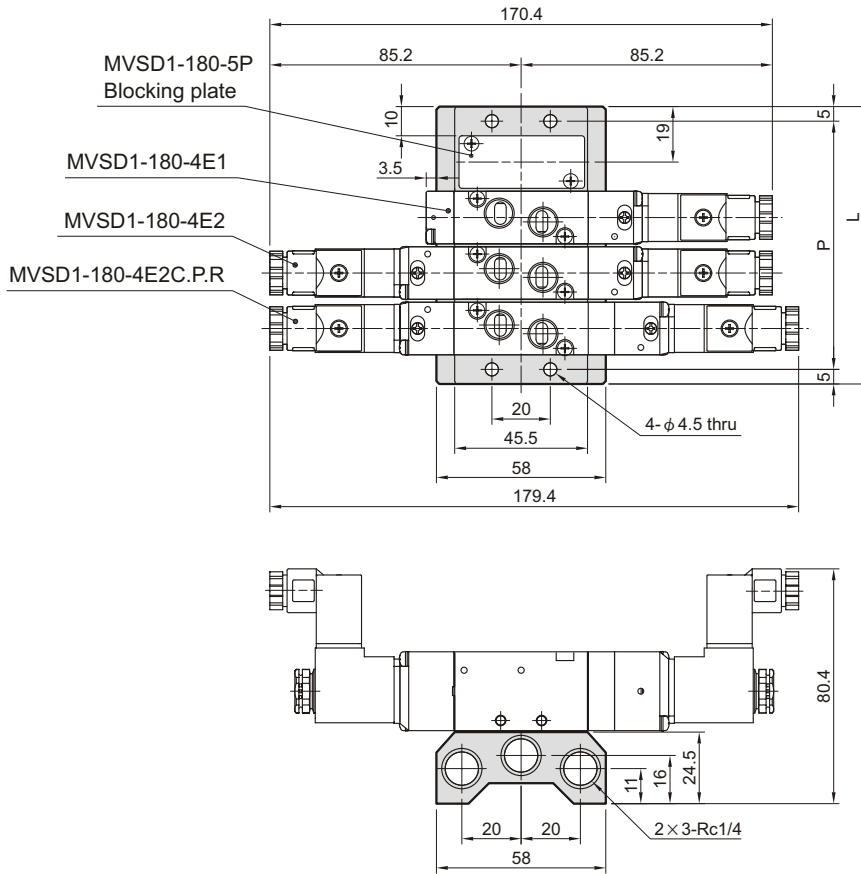
Flow features:



MVSD1-180 Manifold

SOLENOID VALVE

MVSD1-180-5B*



No. of stations	P	L
2	47	57
3	66	76
4	85	95
5	104	114
6	123	133
7	142	152
8	161	171
9	180	190
10	199	209